

OLYMPIC DISCOVERY TRAIL (ODT) IMPROVEMENT PROJECTS

Six-Year (2021-2026) Transportation
Improvement Program

Six-Year Transportation Improvement Program (TIP)

- ▣ Identifies current and planned projects over the next six-years.
- ▣ Implements the policies and identified needs of the County's Comprehensive Plan.
- ▣ **DOES NOT** include County road and trail maintenance related work, which represents the largest annual expense for Road Department funding.
- ▣ Annually updated pursuant to RCW 36.81.121.

Six-Year Transportation Improvement Program (TIP)

- ❑ Like other capital improvement plans, the TIP is a plan for what should be done under the provision of adequate funding.
- ❑ Decisions about advancing projects into design, acquisition, and construction are based on the TIP through the annual County budgeting process.
- ❑ The TIP is updated annually and can be amended to reflect new needs, priorities, revenues, and revised budget assumptions.

ODT-Spruce Railroad Trail Segment

Final Phase at Lk. Crescent

Final Phase:

- >Restore 2nd Tunnel
- >Construct ~2 mi. of trail between Tunnels
- >Pave ~ 4 mi. of trail from east trailhead to existing paved trail.

Result: Completes the ODT around the north shore of Lk. Crescent providing a 10-mile trail alternative for non-motorized users versus US 101.



Photos Taken 10-29-20
*Anticipated to Open
Sometime in November 2020*

ODT-Gossett to Waterline Road (~ 1.6 miles Completed Spring 2020)



ODT-Diamond Pt. Rd to Old Gardiner Rd. Connector (East County Line Area)



2020

- County cleared, graded & constructed trail base.
- Paved 10-ft. wide trail section from Old Gardiner to Diamond Pt. Rd. on Oct. 30, 2020.

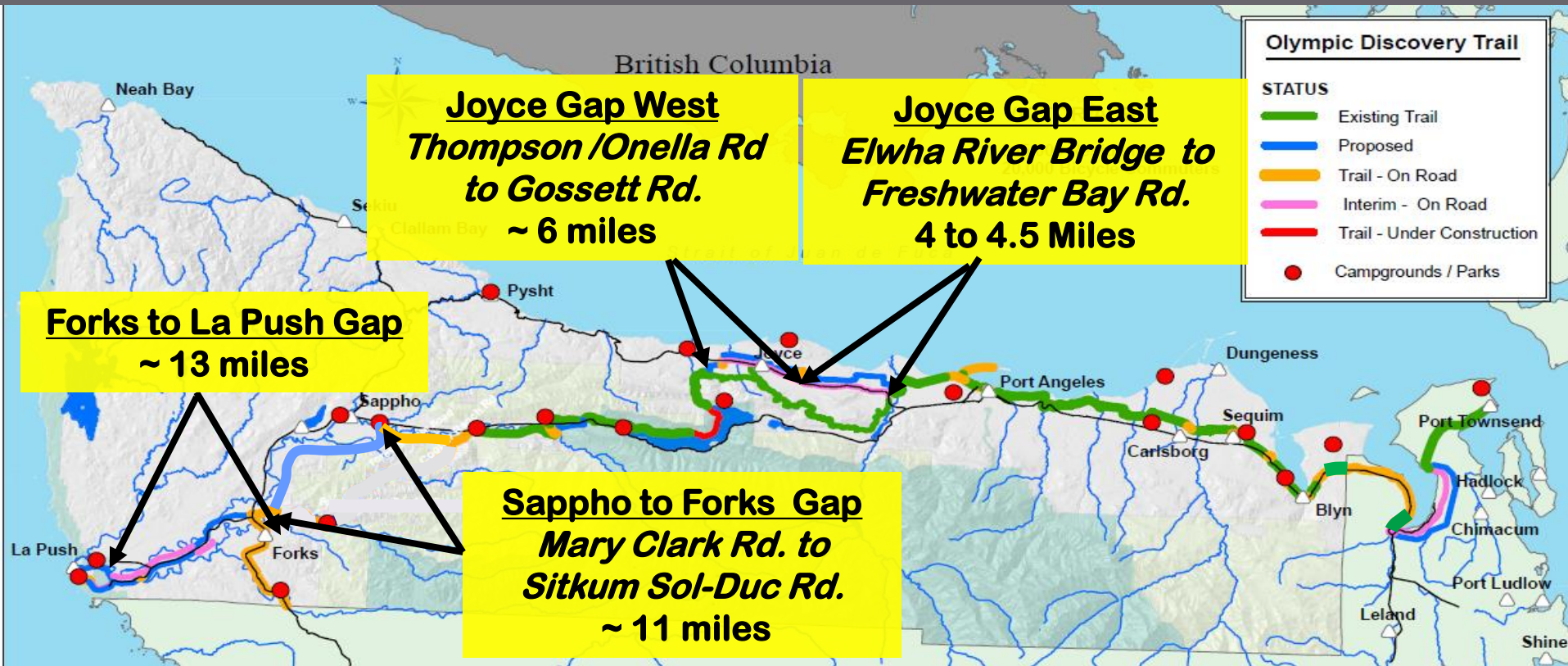


2020/21

- Finish final grade of ~ 100 foot trail spur to crossing along east side of Diamond Pt. Road
- Pave Fall 2020 or Spring 2021

Olympic Discovery Trail

Clallam County Major Gaps



~ 60% of 135-mile
Trail Route Completed



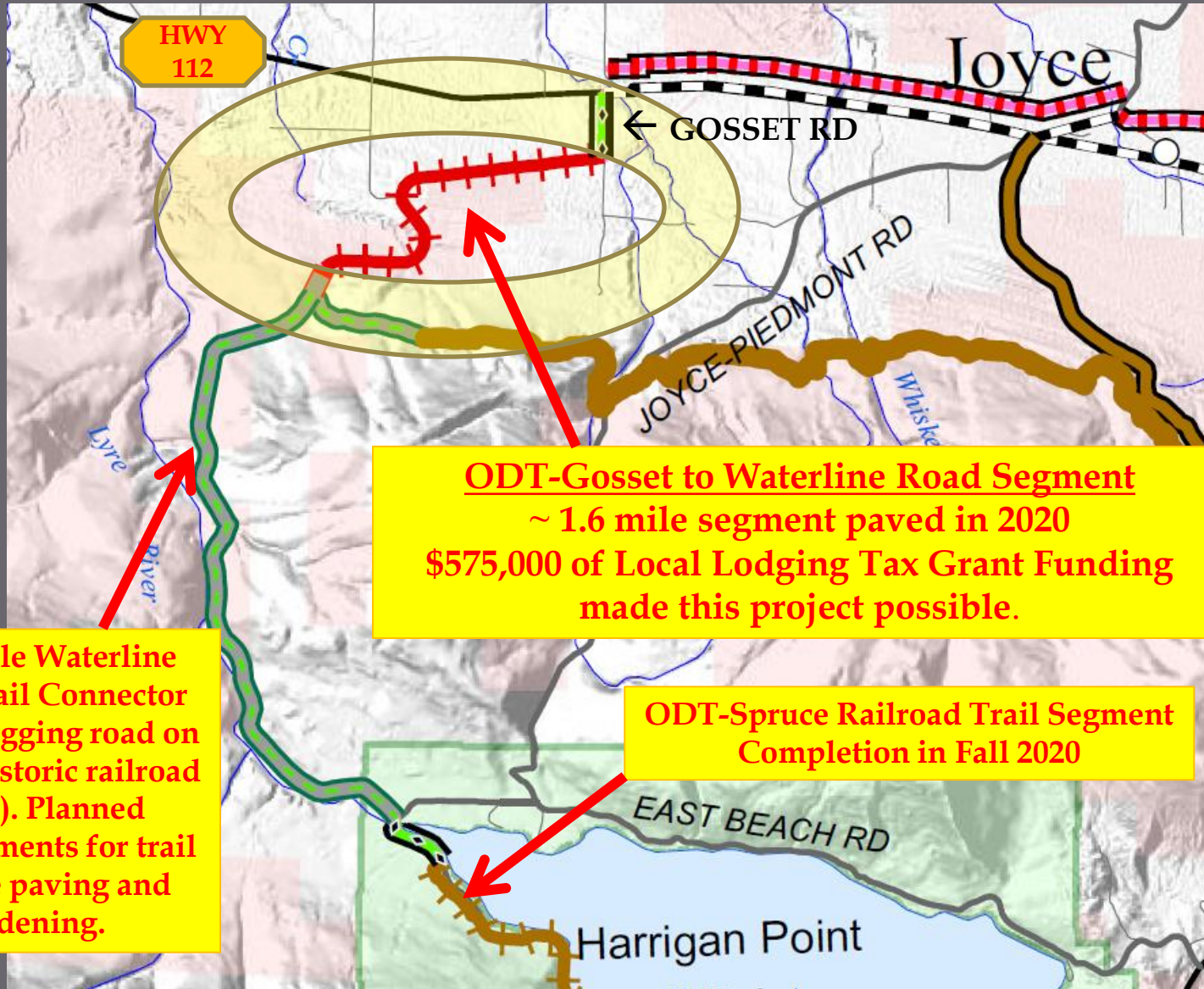
Olympic Discovery Trail

Clallam County Major Gaps

ODT Gap	Distance	2021-26 TIP Focus
Joyce Gap East Elwha River Bridge to Freshwater Bay Rd.	~ 4 to 4.5 miles	Trail Corridor Acquisition, possible construction.*
Joyce Gap West Thompson/Onella Rd to Gossett Rd.	~ 6 miles	Trail Corridor Acquisition, possible construction.*
Waterline Road Connects New Gossett Section to ODT- Spruce Railroad Trail Segment at Lake Crescent	~ 3.5 miles	Paving and Widening for shared trail/logging road access use*
Sappho to Forks Gap Mary Clark Rd to Sitkum-Sol Duc Rd in Forks	~ 11 miles	Trail Corridor Acquisition*
Forks to La Push Gap <i>Calawah River Park in Forks to existing trail in La Push</i>	~ 13 miles	Trail Corridor Acquisition & Construction (Significant Funding Secured or Pending)

***Any acquisition and/or construction dependent on securing funding.**

ODT-GOSSETT ROAD TO LAKE CRESCENT Waterline Road Connector



Forks to La Push Segment Along Highway 110 Corridor

To Existing ODT (~11 miles)

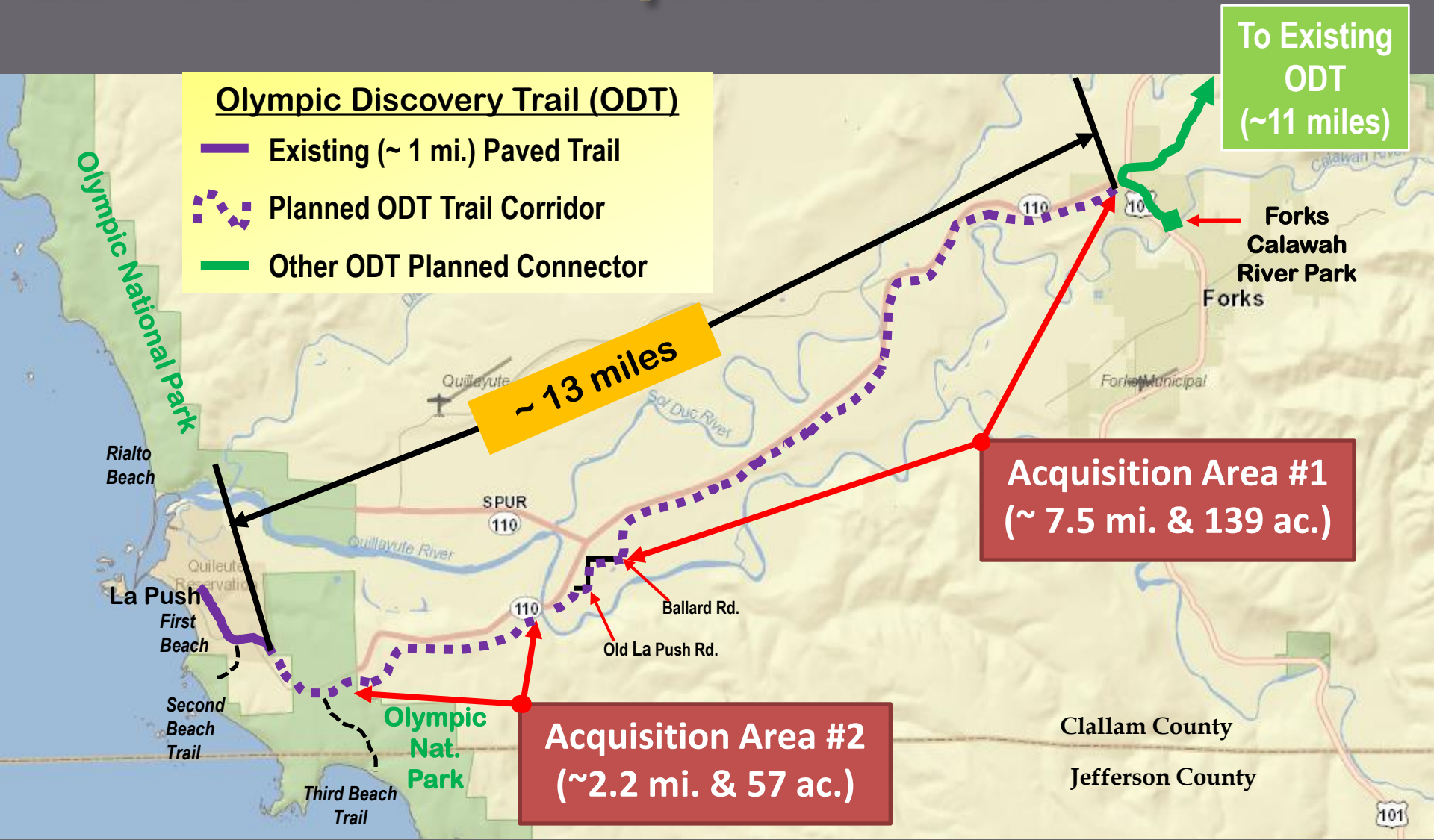
Connects to 2nd & 3rd Beach National Park Trailheads (2019: ~140,000 Visitors)



Olympic Discovery Trail - Forks to La Push Trail Acquisition Corridor

Olympic Discovery Trail (ODT)

- Existing (~ 1 mi.) Paved Trail
- Planned ODT Trail Corridor
- Other ODT Planned Connector



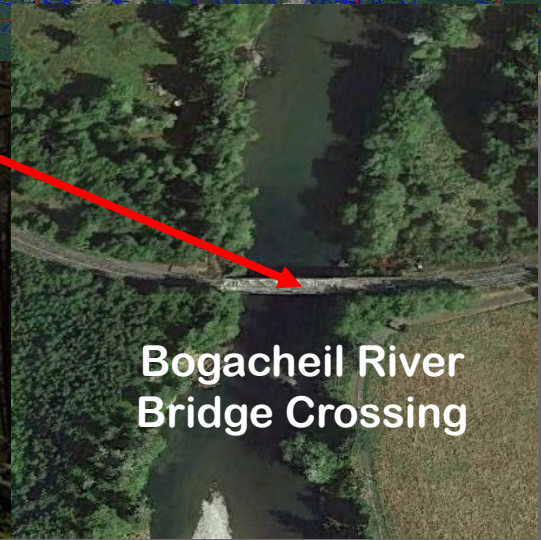
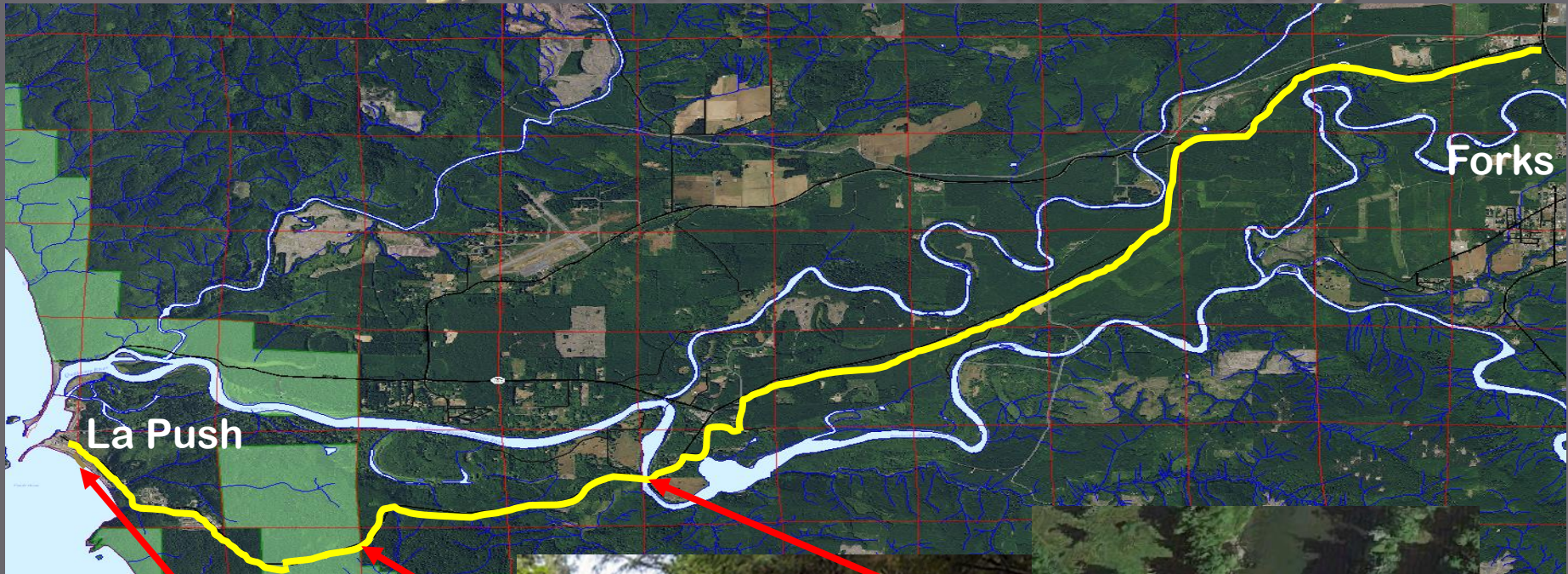
To Existing ODT (~11 miles)

Acquisition Area #1 (~ 7.5 mi. & 139 ac.)

Acquisition Area #2 (~2.2 mi. & 57 ac.)

ODT-FORKS TO LA PUSH

Forested Landscape, Major River and National Park Crossing, and Incredible Coastal Scenery



Forks Multi-User Calawah River Trail Bridge and ODT Project



Forks Ind. Park

County Commissioners grant authorization to sign purchase and sale agreement for acquisition of ~3,100 ft (150-wide) connecting ODT corridor to SR 110 & Sitkum-Sol Duc Rd.

Proposed ODT Segment

Planned 12.5 mile ODT Connection to La Push.

Proposed Multi-User Trail Bridge

Calawah River Park

Forks

ODT-Forks to La Push

Segment	Description	Funding To-Date
Forks Calawah River Park to Highway 110 and Sitkum-Sol Duc Rd.	<ul style="list-style-type: none"> • Construct new, prefabricated steel truss multi-user bridge (220-240 feet long) over the Calawah River from City Park. • ~ 1 mile new ODT trail segment 	<ul style="list-style-type: none"> • \$300,000 Pledge From Lloyd J. Allen Charitable Trust • Year 2020 \$450,000 Transportation Alternatives Program Grant Award
Forks to La Push along Highway 110 Corridor	<ul style="list-style-type: none"> • Acquire needed trail corridor between US 101 & Olympic National Park (ONP) boundary. • Construct ~ 12 miles of trail to connect to existing La Push trail. • Connect to ONP 2nd & 3rd Beach Trailheads. • Use existing Bogacheil Bridge crossing 	<ul style="list-style-type: none"> • 5.153 million Federal Lands Access Program Award (<i>For Construction</i>) • \$905,456 Wa. State Recreation Conservation Office Trail Grant (<i>#1 ranked project-Anticipate funding award in 2021</i>) • \$200,000 ONP • \$20,000 Peninsula Trail Coalition.

Public Meeting Schedule

Six Year (2021-2026) TIP

- ▣ Oct. 12: County Commissioner Work Session.
- ▣ Oct. 21: Planning Commission Work Session
- ▣ Nov. 4: Planning Commission Public Hearing
- ▣ Nov. 9 or 16: County Commissioner Work Session
- ▣ Nov. 24: County Commissioner Public Hearing