



PORT LUDLOW VOICE



P · L · P · A



PORT LUDLOW
PERFORMING
ARTS



Serving the Village of Port Ludlow since 1998 July 2020

www.plvoice.org



Karen Brattain—Broker 360-316-9246

Working with Buyers and Sellers

Karenaboutrealestate@gmail.com

www.portludlowbrokers.com

Call or text today

**PORT LUDLOW
BROKERS** LLC

Celebrating over 65 years!



Port Ludlow

9500 Oak Bay Rd.
Port Ludlow, WA 98365

Port Angeles

110 N. Alder St.
Port Angeles, WA 98362

Sequim

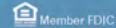
645 W. Washington St.
990 E. Washington St.
Sequim, WA 98382



SOUND
COMMUNITY BANK

Simply better here.

soundcb.com | 800.458.5585



Pizzb Computer Consulting

360-437-7738 or cell: 206-780-8989

Mac, PC, iPhone, tablets, wireless
networks, printers, tutoring,...

Remote support as well as
free, Covid-safe, pick up & delivery

Taming your computer nightmares
with patience, humor, and years
of professional experience



**PORT LUDLOW
BROKERS** LLC

30 YEARS LISTING AND SELLING PORT LUDLOW



WWW.PORTLUDLOWBROKERS.COM | 360.437.4111

Member of:

National Association of Realtors
Washington State Association of Realtors
Jefferson County Association of Realtors
Northwest Multiple Listing Service



New Season Move Management

Senior Moving Specialists

Need Help Moving?

Down-sizing?

De-cluttering?

- Custom fit plans for your needs & budget
- De-clutter, Stage Home for Market, RightSize
- Organize, Pack and Unpack So You Can Relax
- Estate Sales and Final Cleaning



Licensed, bonded & insured

Free in-home consultation!
(360) 774-1255

www.NewSeasonMove.com



Serving Jefferson County and Surrounding Area

The mission of the *Port Ludlow Voice* is to inform its readers of events and activities within the Village and in close proximity to the Village. We will print news articles that directly affect our local residents.

Published monthly by an all-volunteer staff.

INSIDE THIS ISSUE

Arts and Entertainment	14
Bay Club / South Bay	20
Beach Club / North Bay	19
Classifieds	27
Features	4
News	9
Sports & Games	22
Spotlight	16
Village Council	15

The Voice Online

plvoice.org

Breaking news and announcements: Find information that was not available when the *Voice* went to press.

Expanded Articles: Read complete versions of articles, and articles appearing only online, on the announcements page.

Local Artists: See examples of local artists' work and get contact information. See the performing arts schedule.

Letters to the Editor: Read comments, criticisms, and suggestions from other readers on Read Online.

Advertising Information: Find out how to place classified and display ads. Access advertising websites from ads.

Web Cams: Get up-to-date weather and road information (home page).

Archived Voice Issues Online: Copies of every issue of the *Voice*, beginning in August 1998 and continuing all the way to the present one, are at *plvoice.org/readonline*. Also, there is a search box on every page of our website. Look for it on the right under the Menu Bar, and then type in a few key words. A list of possible issues will appear. Happy hunting!

Disclaimer

The printing of an article, or of classified or display advertising, does not necessarily constitute endorsement by the *Voice*.

Port Ludlow Voice

P.O. Box 65077, Port Ludlow, WA 98365

www.plvoice.org

Send articles to *editor@plvoice.org*

Editorial Staff

Managing Editors

Maggie Blackburn, *mblackburn@plvoice.org*

Mary Ronen, *mronen@plvoice.org*

South Bay Community Association and Bay Club Editor

Jenise Harper, *jharper@plvoice.org*

Ludlow Maintenance Commission and Beach Club Editor

Maria Escobar-Bordyn, *newseditor@plvoice.org*

Arts and Entertainment Editor

Beverly Rothenborg, *brothenborg@plvoice.org*

Copy Editor

Maggie Blackburn, *mblackburn@plvoice.org*

News Editor

Maria Escobar-Bordyn, *newseditor@plvoice.org*

Village Council Editor

Valerie Goree, *vgoree@plvoice.org*

Regularly Scheduled Activities Editor

Kathie Bomke, *kbomke@plvoice.org*

Sports Editor

Tim Propeck, *tpropeck@plvoice.org*

Business Staff

Finance Manager

Cathy Thomas, *finance@plvoice.org*

Classified Advertising Manager

Bill Blackburn, *voiceclassified@plvoice.org*

Display Advertising Manager

Jo Buck, *jbuck@plvoice.org*

Distribution Manager

Denny Schuch, *dschuch@plvoice.org*

Production Manager

Mary Ronen, *mronen@plvoice.org*

Photo Editor

Jay Syverson, *jsyverson@plvoice.org*

Subscription Manager

Sarah Schuch

subscription@plvoice.org

Web Manager

Tim Propeck, *plweb@plvoice.org*

ON THE FRONT COVER

Cover layout by Jay Syverson.

Photos by Kevin Erich, Jay Syverson, and Artists' Representatives.

Feature Articles

July: Tribute time – To our Country, to our Maggie, to our Proofreaders

by Jenise Harper, Contributing Writer

July 4, Independence Day: The United States of America has existed as a nation for 244 years. We've celebrated with fireworks and parades, with picnics and river-rafting. It's traditionally a day to honor, to offer tribute to our country. And we at the *Port Ludlow Voice* do, albeit more quietly this year with no grand community plans. But the respect and tribute remain the same. Hooray for the Red, White, and Blue. Praises to our forefathers, and blessings for their insight. Happy Fourth of July to our *Voice* readers.

During this month that heralds the beginning of our country, with its declaration of freedom of speech, I'd like to bring this closer to home with a tribute to Maggie Blackburn, co-managing editor of the *Port Ludlow Voice*. For those who don't know, Maggie and hubby Bill are moving up north to Blaine very soon. The *Voice* staff has been aware the Blackburns wanted to be closer to their daughter and granddaughter, so we're not taken by surprise. But Maggie and Mary Ronen, the other managing editor, both need to be acknowledged for their dedication of time and talent to the community's news magazine. Good luck to Maggie and Bill, and thanks for all you've contributed to our community. (Bill has headed up the classified ads section, a herculean task.) Thanks also to Mary, who will now be bearing the mantle of managing editor on her own, and those staff members who'll continue contributing, writing, editing ... and proofing!

There's a process the *Voice* follows. All articles are sent to Mary Ronen, as managing editor. She disseminates them to the various section editors (News, Community, Village Council, Arts & Entertainment, North Bay, South Bay, Sports) who format and edit as necessary before forwarding to the copy editor (Maggie's "other" position) who checks for potential mistakes and erroneous information, and oversees the quality of the item. The copy editor then sends the articles to the proofreaders, who offer a third look at all items going into that month's issue. Once proofed, all copy goes back to Mary, who handles layout and design.

After Mary finishes putting the magazine together, a proofing copy (known as the "dummy") goes to all the section editors and the staff in charge of display and classified advertising for another look, allowing them to be certain everything in their section is in place and accurate. Once the "dummy" has been approved/corrected, the magazine goes to one last set of eyes. Mary Small peruses the magazine in its nearly final form and sends edits to Mary Ronen, who then finalizes the copy to be sent to the printer. If you've ever wondered why the *Voice* deadline is set for the 8th of each month, you can see there are many steps the publication goes through before it reaches your mailbox.

As a writer, I get all the "glory" of having a byline, but the unsung heroes are the proofreaders – those folks with the eagle

eyes who catch two spaces between sentences, when there should only be one. They know the difference between an "en" and an "em" and they delete all those exclamation points that writers are so fond of. (I do plead guilty.) But there's another aspect of proofing that needs to be explored. Do the words clearly convey the intention? When Maggie, as copy editor, reviewed a headline or an article, she was very cognizant of the meaning, the intention of what she was reading. Did the words really convey what the author wanted to say?

Stay with me, because it's time for some humor! The following are actual headlines that have appeared in news publications. Enjoy! (Whoops, there's one of those pesky exclamation points.)

"Man Kills Self Before Shooting Wife and Daughter" ... Hmmm?

"Something Went Wrong in Jet Crash, Expert Says" ... Really? Ya'think?

"Panda Mating Fails; Veterinarian Takes Over" ... What a guy!

"Juvenile Court to Try Shooting Defendant" ... So much for a fair trial.

"War Dims Hope for Peace" ... Yeah, it could do that."

"If Strike Isn't Settled Quickly, It May Last Awhile" ... Yup.

"Cold Wave Linked to Temperatures" ... Gotta believe the scientists.

"Couple Slain; Police Suspect Homicide" ... Great minds.

"Red Tape Holds Up New Bridges" ... Not duct tape?

"Man Struck By Lightning: Faces Battery Charge" ... Okey dokey.

"New Study of Obesity Looks for Larger Test Group" ... More corpulence needed.

"Astronaut Takes Blame for Gas in Spacecraft" ... Do they serve beans in space?

"Local High School Dropouts Cut in Half" ... Isn't that a little drastic?

"Hospitals are Sued by 7 Foot Doctors" ... Boy, are they tall!

And the winner is...

"Typhoon Rips Through Cemetery; Hundreds Dead" ... Did I read that right?

Based on those headlines, proofreading might be a dying art. Thank goodness for the excellent staff of proofreaders for the *Port Ludlow Voice*, and a special round of applause for Maggie Blackburn who would never have let one of those headlines get into our publication. We'll miss you, Maggie and Bill. Stay safe and healthy; enjoy being closer to your family.

Wanted - Unsung Heroes

by Carol Riley, Contributing Writer

There is an important, although subtle, message in Jenise Harper's article about the Port Ludlow Voice. The article is a fitting tribute to Maggie and Bill Blackburn and their contributions to the magazine as Co-Managing Editor and Copy Editor (Maggie) and Classified Ad manager (Bill). They will be missed! But the underlying message is how important volunteers are to the Voice. This community is so fortunate to have a quality publication like the Voice. The first thing our realtor handed us when we were considering Port Ludlow as our new home was a copy of the Voice. What other guide gives you such insight into the heart of our community—the activities, the points of interest, the people, the businesses, the soul of Port Ludlow?

The Voice is an all-volunteer organization, and we need volunteers. The copy editor reads the articles, revises the copy to improve readability, checks for grammatical errors, verifies facts, and maintains a log of articles received. On average, the Voice receives between 50 and 60 articles each month.

The classified ad manager is a vital behind-the-scenes position that requires no writing skills. The manager receives the classified ads, counts the words, figures the invoices and mails them out each month, and maintains the accounts in QuickBooks.

Another vital position on the staff is filled by our proofreaders. Proofreaders are the eagle eyes that correct any errors in the copy. Proofreaders check format, spelling, punctuation, dates, and times, all the while looking for a sense of flow, so readers get all the information they need in a cohesive, well-presented delivery.

Does this sound like something you would like to do? I hope so! Please contact Mary Ronen at editor@plvoice.org for more information or to express your interest in becoming a Voice volunteer.

The Oaks of the Quimper Peninsula

by Tim Rensema, Contributing Writer

Captain George Vancouver, while conducting his survey along the Admiralty Straits and Puget Sound south of Port Townsend, recorded oak trees growing along the shore (maybe in the Irondale area?) and named the area Oak Cove (p. 16, *With Pride and Heritage, History of Jefferson County*). Now if you travel down the west side from Port Townsend to Brinnon, you see nary an oak. However, if you visit Vancouver Island, around the city of Victoria you will see many oak groves. These are the same oaks that used to cover much of the shoreline of Jefferson County, and are very prevalent going south from Olympia. These oaks are called Oregon White Oaks (*Quercus garryana*).

Oregon white oak is the only oak native to the Pacific Northwest. It is a medium sized tree, seldom more than 50 to 70 feet high and two to three feet in diameter at breast height. The bole is usually short and crooked, and appears on almost any kind of soil. It usually grows in small groves mixed with Douglas Fir and Pacific Madrone. The tree is intolerant of shade and eventually dies when overtopped by Douglas Fir. Given the slow growth habit, Oregon white oak is not a valuable timber species. It would

make good firewood. Because of the better habitat for red cedar and Douglas Fir, as well as the settling of the more suitable home sites along the coast, it may have disappeared from this area of Washington. Given that Douglas Fir was encouraged to grow, it is possible that the small groves of the oak were harvested by the pioneers to encourage pasturelands or the growth of the Douglas Fir. Suffice to say, there are very few of the oaks that Vancouver identified south of Port Townsend. Today, we only have memories of the oak in the names "Oak Bay Road" and the "Oak Bay" community south of Port Hadlock.



Oregon White Oak grove on Indian Island.

Photo by Tim Rensema

If you're interested in seeing Oregon White Oaks and you don't wish to drive south of Olympia or to visit Vancouver Island, we still have some growing in Jefferson County. The one "stand" that I have seen are approximately 40 trees growing along the south side of the connecting road between Marrowstone and Indian Islands. If you look to your right (going east) they are in a pure grove. Their appearance does not reflect most Americans' concept of the great old white oak or live oaks, or even those blue oaks that grow along the coast of California. Luckily there is some regeneration, so there will be oaks there for some time if they are left alone. The bark is light gray and ridged. We do however, have one exhibit of a beautiful Oregon White Oak growing right in front of the Beach Club. A rudimentary guesstimate of age based on the diameter of the trunk at 4.5 feet high, is between 100 and 110 years old. This could put its planting within the time period that Cyrus Walker was planting various species throughout Port Ludlow as an informal arboretum. Regardless, this tree was planted well before Port Ludlow became a planned resort.

For those who may be unfamiliar with oak trees, in general they are called either white or red/black. White oaks have rounded lobed leaves and the acorns which mature in one year, for the most part can be eaten (preferably after they are roasted). Red/black oaks have very sharp lobed leaves (come to a point).

continued on next page

Oaks continued from previous page

Their acorns take two years to mature and must first be treated to remove the bitterness in the nut. So, if you're in the woods where there are oaks and you're hungry, your best bet is to look for white oaks. Some Native Americans ground the white oak acorns into a flour to make a dough. Live and willow oaks have a very narrow leaf (like a willow) but their acorns are like other oaks. They are usually red oaks. Oaks can provide a very colorful display during the fall, depending on the species. If you would like to see an example of a red/black oak, a California Black Oak is growing at the entry to the Admiralty Condos. It is well over 110 years old.

So, the oaks of Quimper probably never were in abundance and, possibly due to the lumber industry and farming, what small groves of oak existed have disappeared. However, we are lucky to have the one surviving grove on Indian Island that still seems to be somewhat healthy.

Progress on the Olympic Discovery Trail

by Merrily Mount, Contributing Writer



The Larry Scott Trail (LST) in Port Townsend is one of the original sections of the Olympic Discovery Trail (ODT), designed from the beginning to be the eastern portal of the ODT. It was dedicated thirty years ago this year. The avid local cyclist after whom the trail is named, along with other local friends, formed the “Church of the Rear Derailleur” and began promoting the idea of a continuous non-motorized trail on the old rail grade between Port Townsend and Port Angeles as soon as the rails were removed in the mid-80s. The Peninsula Trails Coalition (PTC) was then formed and gained non-profit status in 1988, just two years before Larry’s untimely death. Many more details of the founding of the PTC and the history of the rail lines can be found on the ODT website (olympicdiscoverytrail.org/about-us/history). Later that year, the first section of the LST from the Port Townsend boatyard to Mill Road was completed and opened to the public, initiating the westward march of the Olympic Discovery Trail.

The PTC has been busy ever since in promoting the trail, working with the 14 jurisdictions (counties, towns, parks, tribes) through which it passes, and fundraising to help with its eventual completion. The portion of the ODT on the Quimper Peninsula is unique in that it encompasses four different trails—the LST and ODT, a section of the Pacific Northwest National Scenic Trail (running from Glacier National Park in Montana to the Pacific Coast here in Washington), and the newly announced Great American Rail-Trail (GART)—a twelve-state trail from

Washington, D. C., across the nation and to the Pacific region following the route of the ODT here in the “other” Washington.



Discovery Bay curve.

In Jefferson County just two sections of the ODT need to be completed to create a contiguous route from Port Townsend to the Clallam–Jefferson County line at Diamond Point Road on the Miller Peninsula. One of those sections is a one-and-a-half-mile section on the west side of Discovery Bay, paralleling Highway 101. The other is the much more challenging section over the Eaglemount area between the current end of the LST at the Milo Curry trailhead (near the Four Corners intersection) and Discovery Bay. This 11-mile segment of the ODT is referred to as the ODT-Eaglemount segment (ODT-E).

The Jefferson County Public Works Department has assigned an engineer dedicated to the development of that section. At this point in the process, the county is concentrating on preliminary design and land acquisition for the route’s northernmost section, between Four Corners Road to the boundary of Anderson Lake State Park. All landowners involved are supportive and cooperative, and an agreement for the needed land should be reached soon. (All jurisdictions on the entire ODT route have agreed not to use the eminent domain process in order to acquire needed trail route land. They are all dedicated to work exclusively with willing sellers.) Meanwhile, PTC is leading the collaboration amongst several key parties to assist Washington State Parks in the design and eventual construction of the next section, extending through Anderson Lake State Park to Anderson Lake Road.

The challenge of determining the initial funding for exploring the route alignment, the acquisition of land, and the initial engineering design was taken on by the Peninsula Trails Coalition in 2015. A meeting chaired by former congressman Norm Dicks gathered together many of the major stakeholders to discuss the ODT-E project. State Representative Steve Tharinger was able to secure one million dollars of unused funds to direct toward the project as allocated by the legislature. The current effort of agreeing on a land exchange between the county and several trail-friendly private landowners will allow the county to reserve the majority of that money for later use on other sections of the route to Discovery Bay.

continued on next page

ODT continued from previous page

Public Works has now begun the process of researching sources of construction funding and is composing a convincing grant application for the Washington Recreation and Conservation Office, which manages more than a dozen different grant programs for projects all around the state. Since the application will be in competition with many (usually well over 100) other grant requests, great detail is included in these applications on subjects such as safety, public access, land and water restrictions, design elements and constraints, economic benefit, healthy lifestyle promotion, scenic and historical value, and so on.



Daley-Rankin tunnel work.

One especially important aspect of the evaluation of the worthiness of grant applications is local public support. The Peninsula Trails Coalition, including its many supporters and volunteers, is an active promoter of this support—specifically, to help the county demonstrate enthusiastic and vigorous local involvement. PTC's support comes in the form of both our membership numbers and our financial support. The PTC has, in the past, provided modest amounts of matching funds toward the cost of several major projects along the entire route.

Our largest single fundraiser is the Trail Blaze Ball, held each fall for the last five years. It has included both a live and a silent auction to which local businesses have generously donated over 100 valuable items. This year due to reasons of which we are all painfully aware, the PTC board of directors has taken the responsible course of action and cancelled this event. Under the current circumstances of the COVID-19 pandemic, it was deemed too dangerous to gather several hundred trail enthusiasts together.

The organization is exploring other fund-raising avenues of course, but supporters are always encouraged to donate by visiting the ODT website, olympicdiscoverytrail.org/get-involved/ways-to-give. The PTC board is very appreciative of the many local residents and users of the trail who will take advantage of this method to help make up some of the lost revenue this year. The PTC is always looking for volunteers to fill the various

committee positions, openings include: Finance and Fundraising, Trail Maintenance, Community Outreach, Volunteer Recruitment, Grant Writing, Endowments, and other ad hoc committees. Volunteer at olympicdiscoverytrail.org/get-involved/volunteer.

Jefferson County is, of course, not the only area where active progress is being made in the further development of uncompleted sections of the ODT. Perhaps the largest and most visible of the current projects is on the Spruce Railroad Trail in the Olympic National Park on the north shore of Lake Crescent. The second of the two original railroad tunnels is being restored along with a one-and-a-half-mile section of trail connecting the two tunnels. This work is expected to be complete by this fall, creating a continuous route from the Log Cabin Resort area to the west end of the lake and onward another twenty miles. Like so many other places along the ODT, the Spruce Railroad Trail section, once completed, will be absolutely gorgeous, passing through the diverse forest with views out over the lake and to the mountains on the south side. When complete, this area will be an outstanding showpiece of the ODT.



Elwha Bridge Trail.

Photos by Jeff Selby

Work on other unconnected sections of the ODT is also continuing. The route from the west side of the Elwha River bridge through Joyce and connecting to the east end of the Spruce Railroad Trail is being developed. Clallam County has received a large grant to plan and develop the Trail along the Highway 110 corridor from Highway 101 in the Forks area to La Push on the Pacific Ocean. Also, Jefferson County continues to work on eliminating the one-and-a-half-mile gap in the trail on the west side of Discovery Bay between the two sections of Old Gardiner Road.

Despite the current disruptions in our lives at this time, progress on the ODT continues, primarily because of the dedication of many volunteers, jurisdictions, agency officials, and other organizations. The Peninsula Trails Coalition is grateful for the passion of these individuals and organizations in continuing to support this worthy effort.

Above all, enjoy this wonderful asset to our Peninsula giving access to the beauty and diversity of this region in which we live!

Eating Around, Continued

by Bev Rothenborg, Arts and Entertainment Editor

GBF Catering is continuing to bring 90 - 100 delicious meals to Port Ludlow two days a week. Customers even drive out from Port Townsend to pick up a dinner. I am continually amazed at the variety of these meals. You pay and pre-order online, so you can drive up and collect your meal. GBF is set up behind Grace Christian Center, and the new days for pickup are on Tuesdays and Fridays between 4:00 and 6:00 p.m. You can see each week's menu at gbf.com. Do not forget to purchase a bottle of wine from Marrowstone Vineyards which has a table set up near GBF with a selection of their wonderful wines.

Ty and Deb Scott, owners of GBF, are also doing a free meals program for those in need on Sundays, called Heal with a Meal, which averages about 90 plus meals. They have partnered with First Security Bank in Port Hadlock to manage the list and logistics of delivering the meals. Anita Schmucker, bank manager, is the point person for coordinating this, and First Security has also provided donations. Tri-Area Community Meals and Terri Ross have also contributed financially, along with many others. Rita Hubbard and Elena Lovato help to deliver the meals each week.

Even though local restaurants are starting to open up again, I will continue to be ordering from GBF as I look forward to their delicious meals. I also appreciate the wine from Marrowstone Vineyards. New things are coming including gift certificates and punch cards which will offer a free meal with every 10 meals purchased.

Plant-based Styrofoam

by Eline Lybarger, Contributing Writer

Styrofoam has become an indispensable part of our culture—found in everything from packing material, to food containers, to building materials. Unfortunately, it is made from petroleum and other toxic ingredients that do not self-degrade; it must be burned, which releases toxic chemicals. It has been inexpensive to produce, but petroleum is not a renewable resource.

About 10 years ago a plant-based Styrofoam was made, but it simply could not compete with the existing Styrofoam. It did not insulate as well, degraded at high temperatures or where there was humidity, and it was expensive to produce, so research was abandoned.

Fortunately, at Washington State University, Amir Ameli, assistant professor of the School of Mechanical and Materials Engineering, and Xiao Zhang, assistant professor in the Gene and Linda Voiland School of Chemical Engineering and Bioengineering, did not give up. They produced a new plant-based Styrofoam. It is made from cellulose nanocrystals found in wood pulp, with polyvinyl alcohol as a binding agent. This new product is light weight, surpasses Styrofoam's insulating qualities, and can support 200 times its own weight without changing shape. On its own it degrades well and, if burned, does not produce any polluting ash. Best of all it is using cellulose, which is a renewable material. Now engineers are looking for a way to produce it economically to compete with petroleum-based Styrofoam.

Peninsula Legal Secretarial Services, LLC





Cammy Brown

**Affordable Secretarial Services
Legal & Business**

Notary Public

360-301-2590
cebrow@cablespeed.com

"If I can't help you, I will find someone who can!"



Shine Mobile Vet Services

Dr. Jaclynn Imai

Vaccines, Wellness, In-home Euthanasia

(360) 302-6077
shinemobileveterinary.com

Volunteers Needed

The Port Ludlow Voice needs your time and talents to fill vacancies on our staff.

If you enjoy reading the Voice, perhaps you would like to be a part of making it happen.

We are looking to fill the following positions:


Classified Advertising Manager

North Bay (LMC and Beach Club) Editor

Proofers

Writers

No experience necessary — Just a desire to contribute your time a few days a month.



For information contact [**editor@plvoice.org**](mailto:editor@plvoice.org)

News

Submit your articles by email to editor@plvoice.org no later than the 8th of the preceding month.

Swansonville Church Update

by Jessie Michaels, Guest Writer



Swansonville Church.

The Friends of Swansonville (FOS) continue to pursue the lofty goal to own, save, restore, and preserve the historic church, and the massive amount of local history on Swansonville Road in Port Ludlow. We are doing just that.

Our board has grown to nine community members from Jefferson County. The national historic registry paperwork to register the church as a National Historic Place is complete and under first review in Olympia. Grant submissions are being finalized, and FOS is in a fiscal agreement with Jefferson County Historical Society, which allows us to be carried under their 501(c)(3) non-profit umbrella until we complete our own application. We have created a five-year strategic plan that includes a sustainable program inclusive of all community members. We have gathered and documented a historic archive for sharing and ultimately to be included in an online museum. Also noteworthy, we have received over \$35,000 in donations including monetary and in-kind assistance.

The most important news of all? The title for the church is now deeded to the Friends of Swansonville. The title has been a mystery to the community and the Jefferson County system for many years. The original deed, which we have in hand, dates to 1905. No record of ownership was to an individual, but only to an entity which disappeared over 40 years ago. After working on this initiative for over a year, FOS has successfully gained ownership, with the next goal being occupancy. Occupancy will allow the community to use the church as a community space by way of the county permitting process. Now that we own it, we will continue to work on saving, restoring, and preserving the building for the community.

FOS co-founders Jessie Michaels and Terra Coyan are so thankful to the community for their support and look forward to more community connections as the organization continues to develop. FOS is also thankful for the support of District 3 Commissioner Greg Brotherton, who states, “The efforts of The Friends of Swansonville in preserving, restoring, and continuing the tradition of community the church represented will deepen our cultural resilience and will benefit generations to come.”



Shown front to back are Jessie Michaels and Terra Coyan. Submitted photos

This project is happening. The Friends of Swansonville are saving the last historical community gathering place in Port Ludlow. To learn more, join our efforts, or to make a donation, please visit friendsofswansonville.com. Like and follow us on Facebook [@friendsofswansonville](https://www.facebook.com/friendsofswansonville).

Small Business Meets the Challenges of COVID-19

by David Wing-Kovarik, Guest Writer

COVID-19 has created many challenges for small businesses. For more than 30 years, Frameworks Northwest in Port Townsend has provided custom picture and art framing, and worked with the artist community throughout the Pacific Northwest. Before COVID-19, custom picture-frame designers would work shoulder-to-shoulder with their clients to create that perfect piece. But social distancing made that impossible.

Now, invention out of necessity has paved the way for live, interactive, virtual custom framing. It took a bit of ingenuity, but the designers at Frameworks Northwest set up a system where they

continued on next page

Frameworks continued from previous page

can work directly with clients on live video. No social distancing, face masks, or gloves needed.

“It has been amazing, really. People are contacting us about their family photos, artwork, forgotten treasures that were once in drawers or backs of closets, or stowed under the bed,” owner David Wing-Kovarik said. “We have never veered away from trying something new; creativity is what we do best here at Frameworks,” he added. “But even I have to admit this one took a bit of problem-solving that had its own set of challenges.”

Here’s how it works: A customer needing virtual custom framing can schedule a pickup, or have their item shipped to the shop. A design appointment is then set. The only difference is that, instead of meeting physically in the shop, the appointment is conducted using live video meeting services such as Zoom and Google Meet.

“We are doing our best to meet the needs of our community and bring a bit of joy,” said Wing-Kovarik. “I think once we are all through COVID-19, we will continue to provide this type of service. It crosses boundaries and locations.”

For more information, visit frameworksnw.com/virtual-framing. You can contact Wing-Kovarik at 360-385-3809, or david@frameworksnw.com.

Preparing Your Home for Wildfire Season

by Brad Martin, Port Ludlow Fire Chief

It barely seems like summer is here, let alone wildfire season, but it is July and a good time to create fire safety zones near your home.

Here are some things you can do to help prevent the risk of fire:

- Clear any outlying combustible debris that surrounds your home’s exterior area and dispose of anything that could cause a house fire.
- Clean roofs and clear gutters of dead leaves and fir needles.
- Move any flammable material away from exterior walls, including mulch, plants, leaves, firewood piles, and anything that can burn.
- Remove anything stored underneath decks or porches.
- Clear vegetation from under large stationary propane tanks.
- Create fuel breaks with driveways, walkways, paths, patios, or decks.
- Plan tree placement to ensure the mature canopy will be no closer than ten feet to the edge of the structure.
- For existing vegetation, keep foliage trimmed at a safe distance from the outer reaches of your house.
- Remove brush and dead vegetation from the base of trees.

Resources for additional fire safety information include Fire Wise, dnr.wa.gov/firewise, and Fire Adapted Communities, fireadapted.org.

I would also like to remind everyone about the Jefferson County Department of Emergency Management website. There you can learn about the Community Emergency Response Team (CERT), or about getting urgent alerts and warning notifications (Nixle) sent to your phone. For more information on CERT, go to co.jefferson.wa.us/1303/CERT-Program. For more information on Nixle, go to co.jefferson.wa.us/1066/Alerts-Warnings.

If you have questions about creating fire-safe spaces outside your home or other questions about Port Ludlow Fire & Rescue, please contact me by phone at 360-437-2236 or by email at bmartin@plfr.org.

Chimacum School District News

by Rick Thompson, Superintendent, Chimacum School District

New Rotary Pavilion on Chimacum Campus: First, a big thanks to East Jefferson Rotary Club and President Paul Wynkoop for providing the labor and materials to construct a new outdoor classroom behind the main campus. Using local volunteers to design and construct the project, the new pavilion will provide classroom space to enhance education experiences. Paul and his team worked tirelessly to gift this very attractive and durable space directly to the students in the school district.

Congratulations to the Class of 2020! While this year’s graduation was unlike any other before it, the students showed grit and enthusiasm all spring. On Tuesday, June 2, the seniors enjoyed an awards ceremony hosted by staff and the Friends of Chimacum Schools. A wide variety of generous awards were given, and you can watch the Senior Award Night Presentation by visiting csd49.org.

On Wednesday, June 3, the school taped speeches and the acceptance of diplomas for a virtual graduation event. The final school event was a drive-through graduation and parade through Port Hadlock on June 13. Thank you to everyone who showed great patience and support for the class of 2020.

Community Service Awards: I am also delighted to report that the following students excelled in community service. Thank you to each student, their parents, and the sponsors for making this happen.

- Gold (200+ hours of service): Cody Clark, Scylia Glanz, Isabella Harvey, Shyla Heaton, Haley Morrison, Wyatt Pennington, Rowan Powell
- Silver (150+ hours of service): Tovah Carter, Lucia Long, Caulin McLarney, Galia Roman
- Bronze (100+ hours of service): Steven Caulkins, Lillian Golden, Rachel Matthes

Summer Meals Program: During the spring’s remote environment, our staff served upward of 4,000 meals per week. This work took place under the dedicated leadership of Director Margaret Garret and food service staff, our Transportation Supervisor Monica Mulligan, our dedicated bus drivers, and talented paraeducators. Many community organizations contributed; the district received a number of donations to help the cause.

continued on next page

Chimacum School *continued from previous page*

The summer meals program transitioned to the YMCA on June 22. If you would like to help with the summer program feel free to contribute to Backpack for Kids, chimacumbackpacksforkids.com, or to the Community Wellness Project, jccwp.org. Your contribution goes a long way to support the wellness of each of our students, and the wellness of the community.

Fall School Opening: The district website, csd49.org, will host all the information you need to know. We also have a helpline, 360-302-5890, that you can contact for specific questions.

We will have school in the fall, and we will do so safely. The school district has engaged a committee to determine the best model for our return to school in the fall. We have many issues to consider when developing the right model for our school district, with guidance from the Office of Superintendent of Public Instruction.

Capital Projects: Finally, I am pleased to report that in May school construction was allowed during the pandemic, and we completed a new roof project at Chimacum Creek Primary School in less than a week. The original roof was replaced thanks to your generous support of the 2018 capital projects and technology levy. We will also be installing a beautiful new greenhouse behind the elementary school. This project is being paid for by state grant funds and some very dedicated local authors who made this happen.

Feel free to contact me with questions or comments: rick_thompson@csd49.org.

Chimacum High School FEED Truck Debuts

by Gary Coyan, Chimacum High School Faculty

Over the past 13 years I have found that in order to engage high school students, the learning has to relate to the real world, and it has to count for something more than a letter grade.



The FEED truck.

Submitted photo

Now, with the introduction of the Chimacum High School food truck program, students can learn real-world skills they will carry with them for the rest of their lives. We are not just concerned with culinary skills, although the students will certainly learn how

to cook. Students will also engage in all aspects of the operation: business planning, cost analysis, customer service, and all the “soft” skills that go along with running a business. These include skills like leadership, teamwork, problem-solving, and flexibility.

Another opportunity the truck brings is allowing students to interact with the community on an authentic level. We will be serving people food while supporting local food growers by using their products.

The food truck enterprise would not be possible without the work of the Community Wellness Project. This group has been bringing local food producers into Chimacum High School for the past three years to talk with students as part of the Food, Education, and Enterprise Development (FEED) program. Students became inspired by our local food producers and wanted to use their products in recipes. That’s how the FEED truck concept was born. Thanks to the support from an anonymous donor, the Community Wellness Project was able to turn our dream into a reality.

Marine Debris Can Ruin A Day on the Water



Marine debris.

Provided photo

With summer here it is more important than ever for boaters to understand the vital role they play as ambassadors keeping Washington’s waterways safe and clean. Two major hazards boaters produce are oil and trash, but few boaters know what to do when they have a small oil spill on their boat or when they encounter marine debris.

Surprisingly, small oil spills from oily bilge discharges account for up to 75 percent of the oil in Puget Sound. Most obviously, marine debris can be a major navigational hazard for boaters. Less obvious, but just as harmful, are oil and microplastics that can and do make their way into the seafood we eat. Luckily, there is plenty that boaters can do to prevent these hazards.

continued on next page

Debris continued from previous page

Marine Debris

The majority of marine debris is composed of small plastics, from cigarette butts to food wrappers and fishing line. Plastics are exposed to tidal action and solar radiation, where they break down into smaller and smaller pieces which makes them both harder for collection and easier for wildlife to accidentally consume.

- Don't bring it. The best way to prevent trash from entering our waterways is to not bring it in the first place. Try to replace single-use plastic products and containers with reusable metal.
- Make a waste management plan for your boat before you go out on the water. Ask these questions: Where are the waste receptacles on your boat? Do they have a secure lid? Are they secure in case of wind or rough weather? Who is responsible for emptying them?
- If a piece of trash does go overboard take it seriously. Commit to retrieving whatever waste was lost and consider picking up trash you see that is not yours. It only takes a little effort to leave our waterways better than you found them.
- If you encounter hazardous waste such as chemical spills or biohazards or see large debris which might prove a navigational hazard, such as derelict vessels or abandoned fishing equipment, report it. If you are unsure who to call contact the U.S. Coast Guard National Response Center at 800-424-8802.
- If any debris poses an immediate threat to you or other boaters hail the Coast Guard on VHF Ch 16.

Oil Spills

Small oil spills may seem like only a drop in the proverbial bucket, but they add up. Between 2011 and 2015 recreational vessels reported spills which amounted to almost 6,000 gallons. Many go unreported. Often these spills are under a gallon and can be hard to spot and track. So how can boaters make sure they don't pollute the waters they enjoy?

- Prevent oil from entering the water system: place a spill prevention pad or bilge pillow in the bilge before you leave the dock. When placed alongside the bilge pump, they prevent oily discharge from entering the water. Pick up a spills prevention kit through Washington Sea Grant or your local marina.
- Check engines and perform regular maintenance. Periodically check that all bolts are tight and pumps and lines are uncracked.
- If you do spill or see a spill, report it to the Washington Emergency Management Division at 1-800-258-5990, or the U.S. Coast Guard National Response Center at 800-424-8802.

Washington Sea Grant, in partnership with the Washington State Department of Ecology and National Oceanic and Atmospheric Administration, works with boaters to reduce their impact through the Clean Marina Initiative. For more information, visit wsg.washington.edu/community-outreach/boating/ or contact Aaron Barnett at aaronb5@u.washington.edu or by telephone at 206-853-6991.

Summer News at the Library

Summer Reading Program

The Jefferson County Library's (JCL) Summer Reading program kicked off June 15 online with live adult and children's programs on Zoom, as well as an online reading challenge with prizes awarded to all ages for logging hours of books read.

This year JCL is collaborating on children and teen programs with Port Townsend Public Library's staff. The programs and reading prizes are co-sponsored by the Friends of Jefferson County Library and the Friends of the Port Townsend Public Library. View all programs offerings at jclibrary.librarymarket.com/events/upcoming.

For readers who register at JCL, every week through August 5, two \$50 gift cards from local businesses will be awarded to adults who enter the challenge. Kids and teens can earn a free book and a t-shirt if they complete the reading challenge. For more details or to register, call 360-385-6544, Tuesday through Saturday, 10:00 a.m. to 5:00 p.m., or go to jclibrary.info/summer2020.

Book Pick-ups and Returns

On June 23, JCL began to offer contactless curbside holds pickup in Port Hadlock from Tuesday through Saturday from 10:00 a.m. to 5:00 p.m.

Staff are prohibited from handing items to patrons as part of the regulations issued by the governor for contactless curbside delivery, so the library has created a specific system to get materials patrons have requested. The first step is to access your online account to place holds for the items you wish to pick up.

After a patron is notified by email or phone that a hold is ready to be picked up, they can park in designated spots at the library and call the phone number posted on the sign. Once the call is received, library staff will deliver items to the trunk or rear seat of the patron's car.

If no phone is available, wave at library staff, and they will come to your car. If patrons do not have a car, staff can also place materials on a table that allows for the required physical distance between the staff member and patrons. At this time, patrons will not yet be allowed inside the building.

Two book drops have also been reopened in Port Hadlock for materials return. Returns cannot be handed to a staff person. The library currently has over 24,000 items checked out around the county, and book returns receptacles only hold about 400 items each. Please use the following guide when returning materials: if your birthday is on an odd day, return your materials on an odd day; if it is on an even day, return them on an even day.

On June 22, the JCL Bookmobile was back on the road with a revised schedule, Monday through Thursday, offering contactless holds pickup and returns collection at the regular stops. Bookmobile staff can either deliver items to a patron's trunk, rear seat, or onto a designated table for pickup. **No members of the public are allowed onto the Bookmobile at this time.**

continued on next page

Library continued from previous page

The Bookmobile will be at Port Ludlow Village Store on Wednesdays from 1:30 to 4:00 p.m. To view the full schedule visit jclibrary.info/use-the-library/location-hours.

Resources and Information

The Library’s digital resources and catalog are available 24/7 on the library’s website. Place holds, access e-materials, stream videos, and link to Live Online programs and events from jclibrary.info.

The library offers daily posts to social media: Twitter, Instagram, Facebook, and weekly e-newsletters with up-to-date information. Sign up to receive eNews on the library’s home page. If you have any questions, please call 360-385-6544 Tuesday through Saturday, from 10:00 a.m. to 5:00 p.m., or email information@jclibrary.info. The Library is located at 620 Cedar Avenue, Port Hadlock.

Stamp and Paper Arts Club to Host Gelli Plates Demo

Please join us on **Wednesday, July 15**, at the Beach Club from 10:00 a.m. - Noon as the Stamping and Paper Arts Club explores working with gelli plates. This is a fun, interesting, and creative way to create backgrounds for collage, cards, scrapbooks, and other media. Gelli printing is a form of mono printing using a gelatin “slab” as the “plate” with water soluble paint to make images. The plates and paint can be used with stencils, stamps or other tools that move or lift the paint before paper is applied. Pamela Raine, who will be leading the demonstration and guiding us through plate use, has extensive experience with the plates.

We request that you RSVP if you will be attending by contacting Chris Spagle at chspag12@gmail.com or Alice Clive at foureyes22@outlook.com. If it becomes necessary to cancel the meeting due to a change in the COVID-19 status, we will have your contact information and will be able to notify you. Your RSVP will also aid us in knowing how many supplies we will need.

Special Requirement: **Please note that face masks are required.** We hope to – safely – see you on July 15.

Garden Tour and Cooking Demonstration Canceled

The Port Ludlow Garden Club (PLGC) is disappointed to be canceling its program scheduled for July 8, a tour of Buggy and Larry Carter’s garden and a cooking demo at their Olele Point home in Port Ludlow.

We hope to be able to reschedule this program in the future. PLGC has some wonderful programs planned for the remainder of the year, so please continue to look for our articles. We will resume as soon as it is advisable.

Port Ludlow Resident Publishes First Novel

by Pamela Raine, Guest Writer

Glen Alberts was never a struggling writer living in a basement apartment that he shared with a family of mice, nor did he hang out at the local coffee house hastily jotting down ideas in a worn notebook. Glen was not one of those would-be novelists who for years believed they had a great idea for a novel but were just too busy to write it.

Since retiring and moving to Port Ludlow several years ago, Glen had nothing but free time to write—and so he did. Glen stated, “Writing a novel is a lot harder than I thought and more rewarding than I could have ever imagined. And, what better place to write than picturesque Port Ludlow.”

As we navigate a new normal amid the coronavirus pandemic, Glen hopes his novel, *Into the Night*, gives readers someplace exciting to go when they have to stay at home. *Into the Night* is available as an eBook and paperback on Amazon. Glen is currently working on a sequel.



Cover by Pamela Raine and Ross Axiotis. Submitted photo



• *Serving Real Estate since 2003* •

HOMEOWNERSHIP
IS THE
CORNERSTONE
OF THE
AMERICAN DREAM.

I am committed to you and your investment when you are ready to sell.





KARENA@KARENAWELLS.COM | 360-403-5800

Dedicated. Ready to Serve You.

Arts and Entertainment

This section features news on Port Ludlow arts and entertainment events, as well as a performing arts calendar for Jefferson, Clallam and Kitsap Counties. Submit news and calendar items to editor@plvoice.org by the 8th of the preceding month.

Port Ludlow Art League

Artist of the Month – Shirley Bomgaars



Heat Superior Waves, artist Shirley Bomgaars.

While Shirley has been interested in art for many years, her creative fire was lit several years ago while attending a workshop hosted by Eileen Sorg, an award-winning artist who works primarily with a mixed media technique of colored pencil, watercolor, and ink. Shirley stated, “The combination of watercolor, black ink, and colored pencils, not to mention Eileen’s whimsical subjects, really spoke to me and inspired me to paint and draw in earnest.”

By happenstance, Shirley discovered black watercolor paper and became fascinated with using pencils, paint, and/or ink on that surface. Some of her favorite pieces have been the ones created on black paper. Shirley also creates artwork using acrylics on canvas. Shirley acknowledged, “Sometimes I just need to glob on some paint, so I pull out a canvas.”

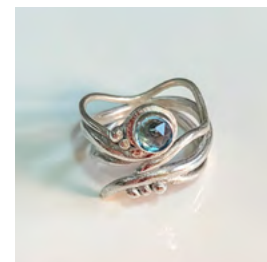
Shirley is passionate about her artwork. Her successful graphic design business, Empty Nest Graphics, provides brochures, posters, business cards, flyers, and ancillary materials to many local businesses.

To view Shirley’s online art show, go to portludlowart.org and click the online art shows link.

Jeweler of the Month – Ginny Ford

Ginny Ford creates fine artisan jewelry in her design studio, Heavenly Mountain Studios, located on Washington’s beautiful Olympic Peninsula.

Ginny works primarily in Sterling silver, copper, and brass. She loves to create textures and patinas on the metal using hammering, pressing and heating, and chemical processing techniques. Unusual and colorful stones add depth and drama to her work. More recently, she has been working with precious metal clays and enamel.



Ring by Ginny Ford.
Submitted photos

To view Ginny’s one-of-a-kind jewelry, go to portludlowart.org and click the online art shows link.

Reflections Group Art Show



The Stone Stacker, artist JoAnna Caro.
Submitted photo

What comes to mind when you think about reflections? Do you imagine reflections of objects or people in a mirror, window, or water? Do you reflect on the current crisis, times gone by, or what the future will hold?

Members of the Port Ludlow Art League will use a variety of mediums to translate their interpretation of reflections for the July online art show.

To view the online art show, go to portludlowart.org.

Village Council

Board Meeting Summary

by Sally Franzel, PLVC Board Secretary

At the June 4, Port Ludlow Village Council (PLVC) board meeting, the following reports were given:

Diana Smeland, President, Port Ludlow Associates

Diana was pleased to report The Inn and Fireside Restaurant are scheduled to reopen Thursday, June 11. Initially, only lunch and dinner will be served to the general public. Restaurant hours will be posted on the website. The outside dining verandah area has been expanded and reservations are strongly suggested due to limited capacity requirements of the JeffcoCARES pledge and social distancing guidelines. Reporting on the Olympic Water and Sewer, Inc. (OWSI) chlorination project, Diana said they had received the building permit from Jefferson County and were waiting for the Department of Health to give final approval of the building plan. An Invitation to Bid will be published for the required 30 days, followed by the opening of bids, and selection of a contractor. She anticipated 45 to 60 days for this process to be completed before they can break ground.

Greg Brotherton, County Commissioner

Greg referred to Washington’s four-phased approach to reopening businesses and modifying physical distancing measures, and added the state is now working on business guidelines for entering Phase 3 of the COVID-19 response plan. At the June 18 Board of Health meeting discussions will be held on whether to apply to move into Phase 3. The Jefferson County Chamber of Commerce instituted “JeffcoCARES”, a business community pledge to help Jefferson County stay safe and healthy. This is an on-going commitment for business owners, employees, and visitors to keep the focus on community wellness while working together to strengthen the economy and community resiliency. Rural broadband access has been identified as a critical issue and the county has received correspondence from PUD (Public Utility District) asking for their partnership in expanding internet access to under-served portions of the county.

Mike Towner, Chair, Communications Committee

The committee has been involved in generating e-Blasts, supporting communications of the COVID-19 Task Force, which have been well received by the community. Mike has been tracking the “open rate.” That is the number of people who actually opened the mailing. Although the rate was higher than the industry average, 49 percent versus 37 percent, his goal was to increase this saturation. Our open rate for COVID-19 e-Blasts was 11 percent greater than the previous Village Council average. These statistics indicated a positive response from the approximately 900 addresses that receive our e-Blasts.

Dave McDearmid, Chair, Community Development Committee

The purchase of Pope Resources by Rayonier was completed mid-May. Dave is remaining in contact with management and is

Village Council Meetings

Board Meeting
Thursday, July 2
 3:00 p.m., TBA

Workshop Meeting
Tuesday, July 21
 3:00 p.m., TBA
plvc.org

particularly interested in whether or not Rayonier will support the expansion of the Port Ludlow No Shooting Zone. The committee is also investigating other properties outside the MPR (Master Planned Resort) to ascertain whether or not parcel owners will support their inclusion in the no shooting zone.

Reopening and Staying Safe

by Kim Moffitt, Chair, PLVC Emergency Management Committee

With the easing of restrictions in our area, keeping healthy requires an adjustment to our way of thinking. Guidelines about hand washing and disinfecting surfaces is not new. In addition to the usual guidelines of washing your hands often, covering your nose and mouth when you sneeze or cough, and disinfecting surfaces, we are now thinking about disinfecting after touching each surface. Each surface we touch could potentially carry the virus—shopping carts, credit card keypads, doorknobs, doors, gas nozzles, etc.



The CDC recommends the following ways to protect yourself while shopping:

- Stay at least six feet away from others while shopping and standing in lines.
- Cover your mouth and nose with a cloth face covering when you have to go out in public.
- When you do have to visit in person, go during hours when fewer people will be there. For example, early morning or later at night.
- If you are at higher risk for severe illness, find out if the store has special hours. If they do, try to shop during that time. People at higher risk for severe illness include adults 65 or

Spotlight

Port Ludlow Performing Arts: A Work in Progress

by Peggy Welker, Publicity Chairperson

We all love to be entertained, whether it be a good movie (with popcorn, of course), a football game, a Broadway production, a National Geographic special, a reality TV show, or a great musical concert. It is our way of escaping the stress of everyday life that takes us to our own “happy place!” However, back in the early days of Port Ludlow, entertainment options were limited ... Seattle was, and still is, a long way to go for a relaxing evening of entertainment. The internet was just gaining steam, there was no smart TV, and professional music groups had little motivation to come out to the peninsula.



PLPA's first Board.

Bev Rothenborg was one of the founders of the Port Ludlow Arts Council, now Port Ludlow Performing Arts (PLPA). Here is a memory she shared regarding how the organization began: “In 1991 the Bay Club was brand new. There were not many homes in the planned community of Port Ludlow. The Bay Club was empty most of the time. My late husband and I purchased our home in Inner Harbor that year. One day the manager of the club asked me if I would get together some friends to sponsor a concert. Her name was Shurli Elson. She had a string orchestra picked out, and the developer Pope Resources would pay their fee. I contacted a few friends who all readily agreed to get on board. Those friends and founding members were Annette Koch (deceased), Janet Force, Jim and Dion Watson—all three of whom still live in Port Ludlow—and me, of course. In those days there was great rivalry between North and South Bay communities in Port Ludlow, and we wanted to try to bridge the gap. We asked North Bay resident Jane Sanford (deceased) to join us, and she agreed. We named ourselves the Port Ludlow Arts Council ... we began making modest profits from the very first concert. At that time, the Bay Club did not charge us for the use of the auditorium. The Inn At Port Ludlow was built in 1994, and initially offered complimentary lodging to our performers.”

The original board was small with only five directors. In the early years, most of the Arts Council entertainment was local. When the board heard a musician or group that they enjoyed, they would invite them to come. It was soon discovered that there was a wealth of fabulous talent within and around the Port Ludlow community. For example, the 1995 Christmas concert was performed by the Community Chorus of Port Townsend & East Jefferson County Washington, a group of 45 male and female singers. The Port Angeles Chamber Orchestra was the performing group for the very first May concert in 1992, and they returned in 1993, 1994 and 1995. Today PLPA and the Port Angeles Symphony Orchestra have a close working relationship through the “Adventures in Music” outreach program. In 1997 local soprano Althea (Lee) Barnes was a smashing success, and two years later she appeared with her husband, son, and daughter-in-law as the Barnes Family Players for a fantastic musical variety evening.

The first “Music on the Green” concert occurred in 1998 with Opus One Big Band and the Dukes of Dabob. It was a huge success with more than 225 people attending and marked the beginning of a long tradition of outdoor “Music on the Green” concerts that have continued every summer until very recently.



Joanna Caro, Kathie Sharp and Jeff Welker having fun at the annual Champagne Season Opener. They join a league of hundreds of volunteers who make these concerts possible

The fledgling board tried to keep expenses to a minimum by doing all of the work themselves—auditioning, booking, printing tickets, flyers, and programs. Those were pre-*Port Ludlow Voice* and Brown Paper Ticket days, so the five directors did all their own publicity and “hawking” of tickets. Thus was born the annual printed program, with Annette Koch initially signing up 21 advertisers. Today, our beautiful programs are a work of art and handed out at every concert. These programs are created through a joint effort of volunteers who contribute the photos, writing, artwork, printing, and solicitation of advertisers. The most recent program boasts more than 50 regular advertisers.

In the beginning, performers had to deal with a sub-standard piano. During one of the early concerts with a wonderful jazz pianist from Cornish College of the Arts, the hammers on the piano became stuck and the musician interrupted his performance to stand up and fix them. After that, a committee was formed to purchase



Dion Watson, an original PLPA board member and 30 year supporter, helps performer with his tie.

PLPA continued from previous page

the Baldwin Baby Grand piano that we still use today. An expenditure of that amount was way beyond the Arts Council budget, so Pope Resources loaned them funds for part of the cost. Free Spirits donated \$1,000, and the Arts Council covered the balance. Within a year they were able to repay Pope in full. More importantly, this marked the beginning of a symbiotic relationship that PLPA still has to this day with the Bay Club and the South Bay Community Association (SBCA).

Over the years, the Arts Council has taken the initiative to continually improve the experience of their audiences by purchasing audio and sound equipment, lighting, tents for "Music on the Green," a piano ramp, regular piano tuning, and supporting acoustic improvements in the Bay Club Auditorium. Most recently, in 2018 a new sound system, cameras and video screens were installed as a shared expense between the SBCA and PLPA.

In 2014, the name Port Ludlow Arts Council was officially changed to Port Ludlow Performing Arts, but the mission of the original organization did not change. The goal remains to bring a full range of cultural events to the community so that our residents can enjoy quality entertainment without lengthy drives to the larger metropolitan areas. Over the years, that mission has expanded to include an extensive outreach program that brings music opportunities and education to school children on the peninsula.



A delighted audience from the "Enchanted Tail," an outreach children's concert at the Bay Club in 2016 and 2017.

Let us take a look at how the education program grew through the last few years. Up until 1999 the Arts Council focused its efforts on bringing entertainment primarily to Port Ludlow residents. However, on September 11, 1999, the Arts Council hosted a benefit party and concert at the Bay Club. The event was a huge success and represented the first time in their eight-year history that they had specifically earmarked proceeds from a concert to go to the support of young musicians. In mid-2007, through the efforts of Martha Dawson and Judy Bergquist, the Arts Council sponsored its first concert for the Chimacum High School and Middle School. They worked with the school superintendent and music directors to formalize the relationship. From that time on, the outreach program has continued to grow and evolve, providing, among other things, student scholarships, music camps, musical concerts, educational workshops, musical instrument rentals to needy students, and the purchase of band uniforms.

Ron and Martha Dawson started working on the PLPA board in the early part of 2000. For many years they both served in multiple positions on the board, including president and vice president, and Martha was directly involved in the initial educational outreach efforts. In 2013, Martha who was an accomplished cellist and a former music teacher herself, passed away unexpectedly. The following year, the Martha Dawson Memorial Fund was established for the purpose of providing musical outreach services to our area schools. This insured the continued growth and support for the outreach program which has become such an integral part of who PLPA is today. Ron Dawson remains a strong supporter of our organization.

Over the last thirty years, many factors have contributed to the success of Port Ludlow Performing Arts, including attending booking conferences, where many premium performers can be previewed over several days. In January of 2001, the Arts Council became a Washington State Non-Profit, allowing all monetary contributions to be tax deductible. The evolution of the internet enabled PLPA to establish its own website and contract with Brown Paper Tickets. In addition, the establishment of the *Port Ludlow Voice* in 1998 helped promote and publicize the educational programs and concert performances. All these are examples of how and why PLPA continued to expand and grow into the exemplary organization that it is today.

From the very beginning, the one thing that has remained a constant, and has been the primary reason for the continued success of Port Ludlow Performing Arts, has been the support of volunteers, donors, and concert underwriters. Hundreds of supportive people, some musicians, and many simply music lovers, have contributed countless volunteer hours and many thousands of dollars to insure that PLPA will continue to provide musical opportunities to underprivileged children and that this area remains a center for high quality musical entertainment that contributes so much to the wonderful quality of life we enjoy here in Port Ludlow.



"Six Appeal." A beautiful stage enhances the excitement of a concert.

Submitted photos

Reopening *continued from page 15*

older and people of any age who have serious underlying medical conditions.

- Disinfect the shopping cart, use disinfecting wipes if available.
- Do not touch your eyes, nose, or mouth.
- If possible, use a touchless payment system, that is pay without touching money, a card, or a keypad. If you must handle money, a card, or use a keypad, use hand sanitizer right after paying.

For more information visit the Center for Disease Control website at [cdc.gov/coronavirus/2019-ncov/daily-life-coping/essential-goods-services.html](https://www.cdc.gov/coronavirus/2019-ncov/daily-life-coping/essential-goods-services.html).

Being prepared for an emergency is not only about having supplies but about protecting ourselves physically, mentally, and financially. It is like an insurance policy. For the same reasons we wear seat belts, safety goggles, hearing protection, and helmets, wearing masks can help protect us and others around us.


Welcome Event is Going Virtual

by Rita Garcia, Guest Writer

The COVID-19 pandemic has caused the PLVC to modify how it will be able to showcase the fifty or so Port Ludlow community organizations this year. Rather than have a group event, a Port Ludlow Community Organization Directory will be developed and reside on the Village Council website so it can be accessed from anywhere in the world.

The welcome event was scheduled for July 29 at the Bay Club. Planning this year included a broader scope and appeal. In addition to inviting new members of the Port Ludlow Community, all residents would be invited to attend and experience the width and breadth of the organizations, clubs, and groups that we have in the community. The name of the event would be changed to Community Open House to reflect this new scope. As with many of our other events, this one needed to be modified because of COVID-19's health implications as well as state and county restrictions. Consequently, the Village Council is actively working on a virtual alternative.

Each organization will have its own page where they can post a picture of their activity, give a description of what they do, and provide whatever contact information they deem appropriate. The web pages will be collected and posted under a separate listing on the PLVC website, plvc.org. All interested persons can review the list and just click on a particular club or organization to see its information. Please stay tuned for more information as it becomes available.



**Speed Limit in
Port Ludlow Bay
5 mph
No Wake, It's the Law!**

Where Tradition Meets Technology



Since 1996
Full Service Auto & Truck Repair
Foreign, Domestic
& Hybrid Maintenance

- **Factory Maintenance**
- **Electrical**
- **Engine Repair & Service**
- **Brakes / Batteries**
- **Transmissions / Clutches**
- **Oil Lube Filter**
- **Alignments**








www.autoworkspt.com
2313 3rd Street • Port Townsend
Behind Les Schwab off Sims Way

360-385-5682



1st Annual Men's Best Ball Tournament
 August 8-9, 2020
\$5000 payout based on full field

All players must have an active established USGA handicap.
 Men's Maximum Handicap - 35



Sign up online or in the Golf Shop.

www.portludlowresort.com/golf

Beach Club/North Bay News

*Submit your articles
by email to editor@plvoice.org
no later than the 8th of the preceding month.*

☼ Denotes Beach Club members-only activity

Update from the Manager

by Brian Belmont, General Manager

By the time this article is published, I am hopeful that Ludlow Maintenance Commission (LMC) has started reopening our amenities and facilities. As I write this month's article (June 3), the Beach Club has been closed for 80 days. The board, operations committee, and staff have been working hard to find ways to operate the Beach Club in a way that our members can use and enjoy, while keeping everyone safe.

Because we have several confined spaces that are high-traffic areas (such as the lobby, locker rooms, and corridors), we have put a lot of thought into how we can maintain safe social distancing for our members, guests, and staff, while trying to make as much of the facility available to our membership as we can. Keeping common-touch areas disinfected throughout the day will be a priority for our staff.

When we reopen, the spa will be ready for use again. Diamond Quality Pools finished repairing and retiling the spa in May.

On June 4, LMC reopened its tennis and pickleball courts. Because the county is still in Phase 2, there are restrictions on use of the Beach Club pickleball and tennis courts. We have also, for the time being, started a court-reservation system on all LMC courts. This will allow us to know who played on the courts and when, should someone become ill with the coronavirus.

This year's annual membership meeting was originally scheduled for April 18, but when the state's Stay at Home order went into effect, the LMC Board of Trustees rescheduled it for July 11. Now, the 2020 annual membership meeting has been rescheduled again for **Saturday, November 14**. We expect that the November meeting will be a virtual or partially virtual meeting, to ensure the safety of our staff and members.

Finally, I would like to recognize all the volunteers who monitor and maintain our beautiful Port Ludlow trails. The Village Council's Trails Committee continues to do a wonderful job keeping tree debris off the trails, maintaining the signage, cutting back all the spring growth, and making repairs to walking surfaces when needed. This year, because of the Stay at Home order, I have been using the trails more than ever, and I have been so impressed with the work that these volunteers put into one of our community's greatest assets. Thank you!

Important Dates

LOA Meeting

Email: portludlowloa@yahoo.com
for information about remote access to meeting.

Sign up for the *LOA Bulletin* by emailing the above address.

LMC Board Meeting

Phone: 360-437-9201

Email: beachclub@olympus.net
for information about remote access to meeting.

Sign up for the *Navigator* by emailing the above address.
Visit lmcbeachclub.com for complete information.

All LMC members are welcome. ☼

As always, if you have questions about this article or the ongoing work at the Beach Club, I can be reached by phone at 360-437-9201, or by email at beachclub@olympus.net.

Your Solution...
to a Successful Transaction!

360-460-5303
sherrylgrimes@gmail.com

PORT LUDLOW BROKERS www.realestateportludlow.com

Sherry Grimes
Your Dedicated
Real Estate Broker

R. G. Bowen

Attorney at Law
Box 1080
Port Hadlock, WA. 98339
832 499 1921
Wills Trust Real Estate Bankruptcy

Bay Club/South Bay News

Submit your articles
by email to editor@plvoice.org
no later than the 8th of the preceding month.



Denotes Bay Club members-only activity.

SBCA Annual Meeting Reminder

by Ray Sheldon, SBCA Board President

The South Bay Community Association (SBCA) annual meeting is scheduled for **Wednesday, July 15**, at 3:00 p.m. This year, we are unable to hold the meeting in the traditional way, in person at the Bay Club. Instead, we will have a virtual meeting, via a web-based conference call.

In order to vote in the election of directors and on the five ballot issues for this year's meeting, our members will need to attend the meeting by proxy. Instructions for doing so and for attending the meeting, either by phone or by computer, are included in the materials that have been mailed to each member.

If you have not received these materials, or need clarification about their content, or have questions about the meeting process, you can contact the Bay Club general manager by email, bayclub@cablespeed.com, or phone, 360-437-2208.

SBCA Policy Regarding Reopening of Bay Club and Amenities

submitted by the SBCA Board of Directors

Many South Bay Community Association (SBCA) members are probably wondering when the Bay Club or its amenities like the swimming pool, the fitness center, the woodshop, the craft room, the meeting rooms, or the tennis courts, will be reopened for use by our members.

Federal or state and local governmental restrictions and guidelines on access to such facilities are in the process of changing. Some of them are not entirely clear as to whether and how they apply to the Bay Club and its amenities, and some of them appear to impose numerous required or recommended conditions and limitations on granting access to various kinds of facilities.

The SBCA Board is monitoring these developments closely and is making every effort to exercise good judgment in weighing the pros and cons of whether, when, how, and the extent to which to reopen the Bay Club or its amenities.

The paramount factor in our consideration of these issues is the safety of our members and others in our community. We must also consider the practicality and expense of implementing the required or recommended conditions for allowing access to such facilities, as well as the health risks and potential legal risks if

SBCA Important Dates

Annual Meeting

Wednesday, July 15, 3:00 p.m.

SBCA members will receive email information detailing how to access the meeting via phone, tablet, or computer.

Committee Meetings are scheduled when necessary.

ARC meeting (virtual) is scheduled for **Friday, July 17, 9:30 a.m.**

To keep informed, please visit plsbca.org.

Meeting minutes are posted at plsbca.org under Association Business.

All SBCA members are welcome. 

there is not full and consistent compliance with all the required or recommended conditions.

We will keep you advised of significant changes in SBCA policy regarding access to the Bay Club or related amenities. Meanwhile, you may be interested in checking federal (cdc.gov), state (coronavirus.wa.gov), county (co.jefferson.wa.us/1429/COVID-19), and PLVC (plvc.org) websites for further information and updates.

South Bay Gleanings

by Jenise Harper, South Bay Editor

When it became obvious that the Bay Club wasn't going to open this spring, and summer availability was dependent on the guidance and direction from Governor Inslee, the South Bay Community Association (SBCA) Board of Directors felt the need to reach out to members with some form of communication, other than the official blasts of information that were periodically sent out by the office (at the direction of the board). Because of this, the electronic publication *Bay Club Courier* reared its fledgling head, and now has four issues under its belt (it's emailed every other week to SBCA members).

In the most recent issue, I put on my Erma Bombeck hat and tried to address our COVID-19 situation with a bit of humor to proffer comments like, "We low maintenance chicks are having our moment right now. We don't have nails to file and paint, roots to dye, and are thrilled not to have to get dressed every day. I've been training for this moment my entire life!" And then I cast my eye on the way we do meetings these days, "My calendar looks like it's scheduling races for me: Zoom with PLPA at 3:00 p.m.

continued on next page

Gleanings *continued from previous page*

Thursday; Zoom with the *Voice* at 9:00 a.m. Monday; Zoom with SBCA at 9:30 a.m. Friday. Seriously, I haven't been late to a meeting for two months!" I've found that a good sense of humor is necessary to keep one's mind healthy during this pandemic.

I've also found that Zoom meetings really do work. I see all my volunteer cohorts on my computer screen; we share reactions. We even wave to each other. It's like, "Wow, there really are people I know and love out there. So good to share time and space while working on a project or for an organization. I wonder how many meetings will continue to be held via the electronic medium once we're able to gather in groupings again. Businesses conduct meetings electronically with great frequency. Perhaps a "new normal" in the non-profit/volunteer world?

Have you heard about "Double-Bubble?" It's a concept that originated in New Zealand and is being perpetuated in Canada. Just choose two people who've been as cautious as you have and invite them to be your new BFFs (that's "best friends forever" in my granddaughter's jargon) during the pandemic. You can gather at each other's homes, dine together, perhaps even share a hug ... as long as everyone obeys the distancing guidelines at all other times. Interesting concept. But whom to choose?

One of the reasons we were drawn to Port Ludlow was the community-center concept. We loved both the Bay Club and the Beach Club, with no preference to buy "north" or "south." So the idea that we're unable to use our wonderful facilities, and that the meeting rooms are vacant, is rather wrenching. The Bay Club very quickly became our social center, from SBCA parties to Port Ludlow Performing Arts concerts to Ludlow Village Players performances. What an idyllic spot we'd chosen, so much to do and be involved with in this tiny little burg. With caution and vigilance on the part of our state, our community, the SBCA, and Ludlow Maintenance Commission, we know the Bay Club and Beach Club will come back to life as we burst that "Double-Bubble" to tap our toes to good music, laugh at a hilarious line in a play (well-delivered, of course), enjoy canapés or chili, and join together once more to celebrate the return of life outside the box (a.k.a. our home).

This month's *Gleanings*: Inject a bit of humor into these pandemic days, "Double-Bubble" if you choose, and "Relish the Return." Stay safe. Stay healthy.

Welcome to South Bay

The South Bay Community Association (SBCA) welcomes our new neighbors—even if we're forced to stay six feet apart. We are glad you're here, and we hope to meet you at one of our monthly socials when the Bay Club reopens, and sizable gatherings are permitted. Please don't hesitate to contact us with your questions about life in Port Ludlow. If you're a new resident, you'll receive a packet regarding the annual meeting and election of officers, set for July 15. Let us know if you haven't received the information, or if you have questions. To learn more about SBCA news and events, you can visit plsbc.org.

Glessing & Associates
Certified Public Accountant
Kathleen A. Glessing

- Tax Preparation for Individuals, Partnerships, Corporations, Estates and Trusts
- Financial and Tax Planning
- Accounting and Auditing, Preparation of Financial Statements
- Computerized Bookkeeping and Payroll, Business Start-up
- Senior Financial Services

Telephone 360-437-9443 / Fax 360-437-9446
 56 Village Way, Port Ludlow, WA 98365

Do It Right
Roofing & Construction

Located locally in Port Ludlow • Excellent Local References
Quality and Customer Satisfaction is our #1 Goal

- ◆ All Types of Composition
- ◆ Metal, Cedar Shakes
- ◆ Re-Roofs
- ◆ New Construction
- ◆ All Types of Repairs
- ◆ All Types of Construction
- ◆ Repairs
- ◆ Remodels
- ◆ Decks, Siding
- ◆ Custom Woodwork

General Contractor's License
 Lic # DOIIR943Q
 Bonded, Insured

William Bacchus
 Phone: **360.774.6348**
 email: doitrightroofing@msn.com


Hear for Life
 AUDIOLOGY

"When experience makes the difference."
 Comprehensive Hearing Evaluations
 Digital Hearing and Assistive Listening Devices
 Hearing Device Repairs & Batteries
 Insurance Billing • Physician Referrals


Camron Meikle, Au.D.
 Board Certified Audiologist

Call For A Hearing Consultation:
360 437-7767
115 Village Way, Port Ludlow

GALE INVESTMENT MANAGEMENT

STEPHANIE GALE, CFP®, AIF®

Holistic financial planning & investment management

New Uptown location:
 675 Tyler Street
 Port Townsend, WA 98368
360-385-5044

By appointment:
 9481 Oak Bay Road, Suite F
 Port Ludlow, WA 98365
www.galeim.com

SECURITIES AND ADVISORY SERVICES OFFERED THROUGH COMMONWEALTH FINANCIAL NETWORK® MEMBER FINRA/SIPC, A REGISTERED INVESTMENT ADVISER. FIXED INSURANCE PRODUCTS AND SERVICES OFFERED THROUGH CES INSURANCE AGENCY.

Sports & Games

Dove House Golf Tournament Cancelled

by Barbara Berthiaume, Contributing Writer

Due to the impact of COVID-19 the Bluebills have cancelled the 9th Annual Dove House Golf Tournament scheduled for Friday, August 21, at the Port Ludlow Golf Course. Last year we had 109 golfers, 8 major sponsors, 33 tee sponsors, and numerous raffle donors. We will reschedule this very popular event again next year and will send out a 'Save the Date' message in the coming year.

Women's Golf Association and Lady Niners News

by Kathy Traci, PLWGA and Lady Niners Publicity Chairperson

This Spring the Port Ludlow Women's Golf Association (WGA) and Lady Niners Golf Leagues collected funds for a joint donation to the Tri-Area Food Bank. Linda Haskin, WGA board member at large, organized the fundraiser and league captains and co-captains Linda Bloemeke, Sharon Russell, and Elaine Girard sent out e-mail reminders to league members to bring their checks to the pro shop. A total of \$4,000 was collected for the Tri-Area Food Bank.

Port Ludlow Golf Pro Tyler Sweet and Assistant Pro Adam Burrows have made the transition to safe golf easy for players by eliminating the need for members to share carts and by introducing social distancing and mask wearing rules for the pro shop. All carts and pro shop surfaces are sterilized regularly. Spouses may share a cart, but all other players are limited to one person per cart. Golf course items that might cause contamination have been removed and the new golf rule that allows the flagpole to remain in the hole during putting has eliminated the need to handle the flagpole. Putting cup depth has been lessened to facilitate removal of golf balls from the cup without touching the sides of the cup.

The women's golf league has also completed a major landscaping project this spring. Due to the reduced manpower of the landscaping crew and their need to concentrate on getting the course in playable shape after its closure, the practice range area was low on the course's landscaping priority list. Since this is the area of the golf club that is typically seen first by visiting players, WGA Co-Captain Peggy Selby led the initiative to beautify the practice range area of the Port Ludlow Golf Course. This included major weeding of the two practice chipping greens, the area around the large practice putting green, and the multiple hitting stations at the top of the practice range. Peggy then arranged for landscaping cloth to be laid prior to covering the newly weeded areas with fresh mulch. Thanks to Peggy's leadership and the assistance of many WGA members, the Port Ludlow Golf Course Range is now an asset to the course that will be enjoyed by visitors and members alike. General Manager Dick Schmidt and his crew have done a herculean job of getting the main areas of the golf course in great shape as well.

There has been excellent participation in women's leagues games on their respective play days: WGA on Tuesdays and Lady Niners on Thursdays. Games have included Toss a Hole per Nine, Better Nine, Blind Nine, Odd Holes, Even Holes, and Fives. Fives is a game where you receive five points if you hit the fairway and then subtract your number of putts. All these games can be posted for handicap updates because each player's score is recorded, and that is the score that affects the handicap of the players. The Lady Niners will collect the scores of their members on three days this season to ascertain the winner of their Captain's Cup and the WGA is planning several competitive tournaments. The Battle of Ludlow will take place on **Tuesday, July 21**, and **Wednesday, July 22**. This will consist of two days of Team Match Play of the WGA vs. the MGA (Men's Golf Association).



Pictured from left to right: Sharon Russell, Linda Haskin, Linda Bloemeke, Elaine Girard.

Submitted photo

WGA Captain Linda Bloemeke invites prospective members to play with the WGA league on any Tuesday morning and Lady Niners Captain Sharon Russell invites prospective members to play with the Lady Niners league on any Thursday morning. Details regarding membership and events are available at the Port Ludlow Golf Course Pro Shop. Note: Membership is a requisite for participation in the course's golf leagues.

MGA President's Cup Tournament

by Tim Propeck, Sports Editor

The Men's Golf Association (MGA) kicked off one of its multi-day tournaments on June 1. They are using a new format for the tournament this year which will compress the amount of time required to complete the event. The tournament utilizes match play scoring in which the golfer who wins the highest number of holes wins the round.

In prior years only the first two rounds were scheduled by the MGA president, and all remaining rounds were scheduled by the participants themselves. The expectation was that a round should be completed within a week. Unfortunately, this format would allow the tournament to stretch over six weeks before it was completed.

continued on next page

MGA continued from previous page

The new format chosen by this year’s MGA President, Steve McDaniel, is much faster. The tournament is now limited to 32 participants. The original idea was to have members qualify for the tournament based on their scores from the first four MGA rounds held each Wednesday. Unfortunately, the limitations on the golf course from the state order during the shutdown did not allow the qualifying rounds to be played. Consequently, entries were based on who signed up first.

The 32 entrants were organized into eight groups of four, based on handicap indexes. Each of those groups played a round-robin format where all the members of the group played each other to determine who would progress to the next phase of the tournament. Based on the round-robin results, winners will play a series of three elimination matches to determine the final winner of the tournament. The elimination matches are scheduled to be completed before the end of June and the tournament champion will have played six rounds in total when they are finished. Tournament results will be announced in the next issue.

Port Ludlow Hiking

When this information was being prepared, we did not know the status of the “Stay Home/Stay Healthy” guidelines for COVID-19 as it relates to organized hiking groups, car-pooling and availability of Olympic National Park, etc. Those on the hiking e-mail roster will receive an update the week of a scheduled outing. If you would like to be added to the e-mail roster, send a request to: desdarrow@olympen.com. Everyone is encouraged to get outside on their own at any time and explore trails here in Port Ludlow or elsewhere as appropriate.

Unless otherwise noted, hikers meet at the Bridge Deck at 8:15 a.m. to arrange carpools, get directions to the trailheads and depart at 8:30 a.m.

Friday, July 10 - To Be Announced

Normally we like to get to the high country at this time of year. However, Hurricane Ridge has been closed so it is not an option at this moment. There are other high country possibilities. Watch your e-mail for an update.

Friday, July 24 – Lake Angeles

This is a moderate to difficult hike with 2,350 feet of elevation gain over 3.7 miles, one way (round trip is 7.4 miles). Lake Angeles is one of the largest lakes in the Olympics and will serve as a lunch spot to enjoy the view before returning to the trail head. Information: Burt Peterson 360-437-0849.

Every Wednesday: Timberton Loop

Walk the 4.2-mile Timberton Loop and enjoy views of the Olympic Mountains. Meet at the parking lot trailhead on Timberton Drive at 9:00 a.m.

For more hiking information and pictures of previous hikes to these and other destinations, check out: portludlowhikingclub.com.

Trail Mix

by Merrily Mount, Chair, Port Ludlow Village Council Trails Committee

Port Ludlow has some exquisite areas to relax and enjoy the beautiful Olympic Peninsula environment ... our own “staycation” location. Included are two nice gazebos located along our trail system – one to the north and one to the south of Ludlow Cove.



Building at Picnic Point.

In 2007 Larry Scott, our long-term Trails Committee Chair, and his “Trail Gang” of volunteers built the gazebo and benches at Picnic Point north of Ludlow Cove. Last year Jim Mueller lead a team of volunteers on a “Fun Day” to spruce up the gazebo with a power wash and re-stain. Last month volunteers Larry Scott, Denny Schuch, and Jack Riggen returned to rebuild the Picnic Point benches and re-slate the area. The result is beautiful! Thank you to Larry, Denny, and Jack for your dedication to bringing happiness and joy to our community.



Picnic Point.

Photos by Gary Hicks

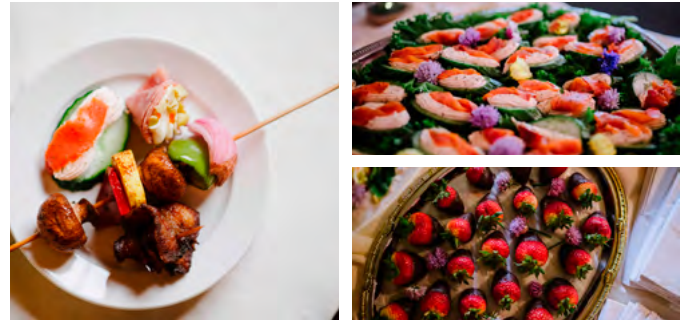
If you find yourself with an extra few minutes, go to the Village Center and park. Go across the street to Ebb Tide Court. You will find a sign on a tree at the southwest corner of the intersection pointing down a trail to Picnic Point. Take a short walk down the trail to the gazebo and benches. Relax in quietness to the energy of the changing tides, birds chirping, the view of Ludlow Bay, and maybe a few kayakers quietly paddling by observing, like you, the solitude of this magnificent spot.

continued on next page

Trail Mix continued from previous page

Ralph Waldo Emerson said “The purpose of life is not to be happy. It is to be useful, to be honorable, to be compassionate, to have it make some difference that you lived and lived well.” The power and energy of contentment with moments of happiness is a wonderful, fulfilling way to live. If you find yourself with an interest to be more involved with the Port Ludlow Village Council Trails Committee, please contact us at plvc.org/contact. We look forward to working with you to make a difference in our community.

We continue to observe social distancing in the Phase 2 “restart” along our trails. Smile, wave, create some space, and send positive feelings to those you meet on your walks. It makes a difference and is a free gift to all.



Don't feel like cooking?...we got you!

Spirits Bar & Grill catering services has crafted specialty menus which are designed for small gatherings. We offer a wide variety of party platters featuring hot entrees, gourmet sandwiches, salads, desserts, and beverages. With these menus at your disposal, you can mix and match your platters to create your own unique catering and match your party's theme or concept. Call today, and together we can create something special just for you!

360-390-4017 X615

www.aldalcoholplant.com/catering

Restaurant Menu Curbside pickup available

Tuesday - Sunday, 11:30 am - 7:30 pm

Place your order and time of pickup by calling 360-302-6348.

Order online: www.aldalcoholplant.com/online-ordering

Volunteers Needed!

The *Port Ludlow Voice* needs volunteers who are interested in writing feature articles and/or reporting on local events and meetings. There are openings for proofreaders, editors, and behind-the-scenes managers. **Experience is helpful but not required.** Curiosity, energy, and knowledge of English grammar are needed. Interested? Contact Mary Ronen at 360-301-4550 or mronen@plvoice.org.



310 Hadlock Bay Road
Port Hadlock, WA 98339



We're here for you, Port Ludlow.

Happy 4th!



Whether you're wondering how these historic times are affecting the real estate market or just curious what your property is worth, we're here to answer your questions. And if you're thinking of buying or selling, we're continuing to find creative ways to safely list and sell your home. We wish you all good health!

Don't forget our Community Shred Event
Saturday September 12th
10:00 am to 1:00 pm



9483 Oak Bay Road 360 797-9344


Windermere
REAL ESTATE
PORT LUDLOW

Liberty Shores  Harbor House
SENIOR LIVING MEMORY CARE

*Exceptional Care
in an Exceptional Place*

19360 Viking Ave. N.W., Poulsbo, WA 98370
360.779.5533




Michael Haberpointner, PT, DPT
Timothy Mansour, PT, DPT
Daniel Wittrock, PT, DPT



ACTIVE LIFE
PHYSICAL THERAPY

Balance Training • Spinal Rehab • Rehab After Surgery
• Vertigo Treatment • Personal Training
Medicare and most insurances accepted
www.activelifetherapy.com
9483 Oak Bay Rd. • Port Ludlow, WA 98365 • (360) 437-2444



SPECIALIZING IN

Post-Surgical Rehab ■ Athletic/Work Injuries
Neurological Injury ■ Cancer Rehab ■ Balance Training
Senior Fitness Classes ■ Vertigo Rehab
Incontinence ■ Foot/Ankle Injuries

DISCOVERY
PHYSICAL THERAPY

Amy Irene Lynch, PT Gail Maciejewski, PT Blake Thedinga, DPT Max Selisch, PT
Erica Nixon-Mack, PT Wendy Nordquist, OT Symbolyn Sebastian, PTA Kara Knox, DPT

WWW.DISCOVERYPT.COM
27 COLWELL ST. (RHODY DR.) 360.385.9310



Cucina
Port Ludlow Village 360-437-8200

\$4 Off
\$3 Off

Extra Large Pizza
Large Pizza

**one coupon per order & may not be combined with other coupons.*

Dine In - Take Out - Delivery (home & marina)
www.cucinaitalianrestaurant.com



Bob's Lawn & Garden Service
"Your Pruning & Lawn Care Specialist"
Quality Service Since 1991
(360) 732-5052
Bob Hoyle, Owner
CERTIFIED MASTER PRUNER
Contractor Lic. # BOBSLGS0160Z
P.O. Box 361 Chimacum, WA 98325-0361 E-mail: bobhoyle@usa.net

VOLVO • BMW • AUDI • MERCEDES • MINI • VOLKSWAGEN
LAND ROVER • JAGUAR • SAAB



CIRCLE & SQUARE
AUTO CARE

(360)385-2070 WWW.CIRCLEANDSQUARE.COM








**Port Ludlow
Community Church**
9534 Oak Bay Road
360-437-0145
www.mylpcc.net plcc@olympus.net
Brent Hirschy
Pastor
"Connecting Christ and Community"
Sunday Worship - 10:30 a.m.
Adult Education - 8:45 a.m. Home Groups - Tuesdays
Blending Traditional Hymns with Contemporary Worship
• Come • Connect • Grow • Go •

Senior's Special Every Sunday
Receive a FREE UPGRADE

Lady's Special Every Tuesday
Receive a FREE UPGRADE

Guy's Special Every Wednesday
Receive a FREE UPGRADE

Environmentally friendly!
LOCALLY OWNED!
\$38.00 monthly
unlimited wash club
FULL SERVICE professional
detailing available!



thecarwash
515 Rainier St. • 379-5717
Located in Port Townsend
at the first roundabout

15 years of Guiding You Home!
Let me be the key to your move!

NIKKI CASAL, BROKER
GLOBAL LUXURY PROPERTY SPECIALIST
360.301.3384
MYAGENTNIKKI@YAHOO.COM

I LIVE. I WORK. I PLAY.
IN PORT LUDLOW!

COLDWELL BANKER
BEST HOMES

Our Law Firm is OPEN during COVID-19 & Appts. are being conducted via Tele & Video Conferencing



Richard C. Tizzano
Elder Law & Estate Planning Attorney
Licensed in WA. & CA.

- | | |
|--------------------|--------------------|
| Elder Law | Guardianships |
| Estate Planning | IRA Trusts |
| Medicaid Planning | Supplemental Needs |
| Wills & Probates | Trusts |
| Powers of Attorney |and More |

Call for an Appointment
(360) 779-5551
19717 Front St. NE, Poulsbo

SHERARD
MCGONAGLE
TIZZANO
&
LIND
Established in Law Since 1914

www.westsoundlegal.com

chimacum corner farmstand

visit us! YUM!

FOOD FROM HERE open daily 10 to 6

9122 Rhody Drive, Chimacum, WA
360-732-0107, chimacumcorner.com

CAN we help?

Buy premium organic WA fruit by the box and save!

newleaf design | build

Residential Design Build Firm

- Architectural design for new homes and remodels
- Permit facilitator for all phases
- Full service general contractor

Our team of expert craftsmen will take your project from design phase to handing you keys to your new home!

Marie Peterson, *President*
360 437 8148 • Cell 360 621 0312
marie@newleafwa.com

PORT LUDLOW'S LEADER IN REAL ESTATE

VOTED BEST
REAL ESTATE COMPANY
- Peninsula Daily News

SINCE 1992

THANK YOU PORT LUDLOW.

COLDWELL BANKER
BEST HOMES

9522 OAK BAY RD
360.437.2278
CBBESTHOMES.COM

I SELL HOMES.
I specialize in Port Ludlow,
and I go above and beyond for my clients.




RUTH
GRIBBIN-SCHMITT
Broker | REALTOR® | SRES®
MYSOUNDBROKER@gmail.com
206.659.3939

Seniors Real Estate Specialist® SRES
www.MYSOUNDBROKER.com

COLDWELL BANKER BEST HOMES


Your IRA shouldn't stop working when you do.



Shelli K. Cates
Financial Advisor
201 West Patison Street
Port Hadlock, WA 98339
360-379-0170

Edward Jones
MAKING SENSE OF INVESTING Member SIPC

ELIN PHILIPS 34 YEARS PROVEN REAL ESTATE EXPERIENCE



Full-Time Managing Broker Representing:
*Sellers
*Buyers
ABR-SRES-GRI


Cell 360.301.9115
Elin.Philips40@gmail.com

PORT LUDLOW BROKERS.
INDEPENDENT REAL ESTATE PROFESSIONALS


www.portludlowbrokers.com

Oak Bay Animal Hospital

975 OAK BAY ROAD • PORT HADLOCK, WA 98339
E-mail: oakbayanimal@olympus.net • FAX (360) 379-8124
Phone: (360) 385-PAWS



Madelyn Curll, DVM



Housecalls since 1996

The Voice Needs Your Help

Are you friendly and helpful? Willing to volunteer to serve our Village? The *Voice* needs a new Classified Advertising Manager. Take calls, edit ads, and produce billings.
Email: mronen@plvoice.org.



Is This The Year You Get A Boat?
Power • Brokerage • Sail




Rob Sanderson
Broker, Captain, Instructor.

(360)316-9370 ptboatco@gmail.com
★PORTTOWNSENDBOATCO.COM★

Classifieds

The cost of classified ads is 30 cents per word (\$6 minimum charge). There is a prepayment discount, 10% for 6 months, 15% for a year. We accept "personal" ads such as public "thank you" ads. We do not accept ads of a political nature. The deadline for new ads, changes, and cancellations is the 8th of the preceding month. We send out invoices on the 1st of the month. We normally send emailed invoices but will mail them if you request. Ads will run until canceled. You may pay by check, credit card or bank transfer. Email your ad and contact information (name, billing address, phone numbers, and email address) to Bill Blackburn at Voiceclassified@plvoice.org or call 360-344-2271.

COMPUTER & TECHNOLOGY

Pizzo Computer Consulting. Taming your computer nightmares with patience, humor & years of professional experience. To learn more about us & our happy customers, pizzoconsulting.com or 360-437-7738.

Computer Sleuth – Is your computer walking instead of running? Try the simple things first! Local references available. Call Eric Hammond 360-343-4052.

Apple Mac and PC warranted sales and service at Port Townsend Computers includes Mac warranty repair by the Peninsula's only authorized Apple technician. House calls: setup, repair, and networking. 360-379-0605.

EMPLOYMENT

Port Ludlow Resort. Now hiring for multiple full and part-time positions. Please visit portludlowresort.com/about-us to view and apply for open positions.

Yacht Refit Co. seeks reliable self-starters with a competency in marine electrical systems. Project is at Port Townsend Boat Haven. Ability to complete projects on time is a must, flexible schedule, pay rate depending on experience. Position is available to start immediately. Email resume to olympiagroup11@gmail.com or call: 248-705-0580. Job Types: Full-time, Part-time. Salary: DOE.

FINANCIAL SERVICES

Taxes & Accounting. We specialize in tax preparation & needs of small businesses. We make house calls. Call 360-437-1392. Great service/fair prices. Duane E. Anderson, CPA.

Accounting: Bookkeeping services, payroll & payroll taxes, tax return preparation. Need someone to get your books ready for tax season or to keep the books up to date? Do you need help with personal or business tax return preparation? More than 20 yrs. experience. email Rhonda @ r3granger@gmail.com or call 360-358-5340 for more info.

HEALTH & BEAUTY

Joy Point Acupuncture is an integrative practice specializing in chronic pain relief, utilizing organ balancing, cranial sacral therapy, myofascial release, and shiatsu massage. Accepts major insurances. Now Offering Ashiatsu Massage! Contact Jillian Rifkind L.Ac, EAMP at 360-523-2091 or visit joypointclinic.com. 9481 Oak Bay Road.

Ludlow Bay Massage & Wellness Spa - Serving Port Ludlow since 1998. We offer a spectrum of treatments to suit each person. Massage Therapy, Skin Care, Waxing, Body Scrubs, Mud Wraps, Eyebrow Microblading, Eyelash Extensions & Gift Certificates, Open Mon.-Sun. by appointment. PortLudlowSpa.com, 360-437-3798.

Physical Therapy in Port Ludlow. Active Life Physical Therapy. Our services include balance training, spinal rehabilitation, vertigo treatment, and joint replacement therapy. Medicare accepted. 360-437-2444. Michael@activelifetherapy.com.

Foot Care. Dr. Steven Reiner, DPM, Podiatric Physician & Surgeon. Bunions, hammer toes, toenails, diabetic shoes, orthotics, heel pain. Located at 204 Gaines Street in Port Townsend. Call 360-385-6486 for an appointment.

Tootsies: your neighborhood nail spa. 7551 Oak Bay Rd (across from Port Ludlow Fire Hall) Available by appointment, 360-437-2332.

Haircuts at Sonja's Bayside Barber. Open Wednesday thru Friday starting at 8:30 a.m. By appointment only, located in Port Ludlow Village, 360-301-0009. Thank you for your business.

Ear Candling. Gentle, fun, relaxing, and soothing to the soul; treat yourself! This is a routine health procedure in many European countries. Call Janette at Discover Your Health, 949-275-3848.

Need Sleep? Have you thought of room-darkening shades in your bedrooms? Call Diane for a Free quote. Competitive pricing, professional services. Clearview Blinds 360-774-2658, diane@cvblinds.com.

Susan's Foot Care - "Gentle Care for your Toenails and Feet." Done in the comfort of your own home. Fingernail clipping included. Call for more information to make appointment. Port Ludlow client references available. Susan Vokurka, L.P.N. 360-379-5710.

Certified and Experienced Home Care Aide in Port Ludlow. Available for in-home care, light housekeeping, and transportation. Hard working, non-smoking, pet loving, and patient. \$25/hr + mileage for errands. Call or text Rebecca at 360-316-9354.

Therapeutic Arts Center is a collective. There are multiple private practices & we have classes & offer monthly group space for the community to gather in a healing space. Visit therapeuticartscenter.com for our schedule / events / opportunities & updated information on the wellness providers working at the centers!

Ayurvedic Practitioner now seeing clients in Port Ludlow. Call 360-316-6225 to schedule a consultation or to learn how Ayurveda can help you experience a more fulfilling life.♥

Where is your PAIN? Arms, legs, feet, back? To try a new micro-frequency device call Shirley 360-437-9298.

HOME RENOVATION & DÉCOR

Quality Painting with Affordable Pricing. Exterior, interior. Pressure washing. Lots of local Port Ludlow references. Bonded & insured. License CBSPAP*917CD. Call Tony Forrest, owner, CBS Painting, for a free estimate. 360-633-5702.

Arnett's Affordable Home Improvement - All remodeling and home repair, Kitchen and Bath Specialist, Tile, Stone, Hardwood and Laminate flooring, Construction, and repair of Decks. "When you want it done right the first time-call us!!" Arnett General Construction 360-477-1935; WEB.constructiontilepro.com; CCDONARAG875DL; local references.

Ludlow Custom Contractors. Specializes in custom home painting, decks, & finish carpentry. Contractor's License #MOSHECJ994MC. Christopher Mosher, 360-301-9629. "Custom Designing Your Dreams."

RW Construction. 30-years' experience remodeling & custom construction. Small jobs OK. I also consult on renovations or remodels. Avoid innocent but expensive mistakes. Great references. Licensed/bonded JOHNRC*983DF, 360-302-1242.

JDG Construction Inc. 30 years in local business. Free estimates on remodel & new construction, 360- 385-3287.

Do It Right Roofing & Construction. High quality roofing & construction & remodeling. Owner on every job. General contractor Reg. #DOITRIR943QL. Locally located in Port Ludlow. Excellent local references. 360-774-6348.

Dave Peterson Tile & Stone. 35 years' quality service. Kitchen & bath specialist. Master stone setter. General contractor. Modeled cement showers. In-floor heated ADA showers. Neat & clean. Local references. Lic#CCDAVEPT943DW. 360-681-2133.

Professional Tile & Grout Cleaning/Sealing. Clean Grout Northwest, regrouting, re-caulking. Cleaning & sealing, ceramic, porcelain, natural stone. Licensed, bonded, insured. Lic#GROUTGN905DJ, 360-621-1730. cleangROUTNW.com.

Remodels, Additions, Finish Work & Handyman Services. Carpenter dedicated in providing quality work for Port Ludlow customers! Licensed, Bonded & Insured. Call Chris Travaglio, 360-434-8999. THEGREYDOOR.net.

Interior Design & Décor 15 years professional design experience. Remodel selections, furniture design, color consultations and more. Call Chelsea Travaglio 206-669-7443. THEGREYDOOR.net.

Complex construction project in your future? Residential/commercial, new development, remodel, public, or private. General Project Management gpmusa53@gmail.com, 360-821-2919. #CC GENERPM866JA.

Custom Window Coverings Blinds, Shades, Draperies. Competitive pricing, professional services. Call Diane for a Free in-house consultation. Clearview Blinds 360 774-2658, diane@cvblinds.com.

HOME SERVICES

JR Enterprises. Repair, remodel, small projects, and handyman services. General Contractor. JRENT*831KW. 360-908-4311.

Call Jeremy at All Clear for your gutter and window cleaning needs. Serving the area for over 10 years. Free bids and reliable service. Licensed and insured. 360-301-6083.

Professional House Cleaning. Please call Maria Carmen, 360-301-5975 or 360-302-0909. Email: arceo.maria@yahoo.com.

Legion of Clean (formerly Stefani's Cleaning) Jefferson County's Top Professional & Reliable Cleaning Service. New name, same owner, and same great service! Licensed, Bonded and Insured. 360-344-8409 stefani@legionofclean.com.

Olympic Gutter Cleaning & Moss Treatment. Improving the appearance & life of your home. Call to set up an appointment at 360-301-9980. Licensed & insured.

Pristine Clean Gutter and Moss Removal: Commercial and Residential. Tile, Comp, Cedar and Metal rooftops, Gutter repair, Moss prevention plans. Pressure Washing, Siding and Surfaces, Fences. Licensed, Bonded and Insured. Lic# IMMEDRL942PQ. Immediate Results Landscaping. Call: 360-379-2498 or 360-440-2238.

Pressure washing is our specialty. Make it look new again with ecoclean pressure washing services! Driveways, patios, decks and more. Give us a call 360-531-4821.

Handyman. Pressure Washing, I use an environmentally Green safe soap. Garbage disposal, Faucet, Light fixture, Ceiling fan and Bath fan replacement. Faulty outlet or Switch replacement or maybe something else? Give James a call @ R&M Services 360-301-2683. Residential Repair and Maintenance Lic# RMSERS*835B3. Bonded and Insured. randmservicesrm@gmail.com, Port Ludlow Resident.

Downsize for Inner Peace. Personalized solutions for relocation planning, space editing, organizing, private sales of select items, or entire estates. I work with you to honor privacy, reduce stress, and find joy. Licensed, bonded, insured. 508-284-0078. lisa@lisabmartin.com.

Window Blind Restrings and Repairs. Most cases same day service. Give James a call @ R&M Services 360-301-2683, Port Ludlow Resident.

Home Team Housecleaning. Hardworking, honest, fast, and friendly young Dominican girl. My desire is to make my clients happy and keep their homes clean. If you need references, just let me know. Please contact Sheryl at 360-860-2774 or sheryllara@hotmail.com.

Blind Repair and Installations. We repair most blinds. Call Clearview Blinds 360-774-2658 for pick up. Or drop off at Dana Pointe Interiors at the Village Center Port Ludlow. diane@cvblinds.com.

Peninsula Residential Services. Moving, hauling, storage, loading moving trucks, dump run, real estate cleanup, hoarding cleanup. Landscape Disaster Repair. 16' Box Truck. Local Port Ludlow Business. peninsularesidentialservices.com. Questions? Call Chris 360-316-1523.

JC's Painting and More. Painting-drywall repair & finishing-carpentry-handyman tasks and More. Free Estimates 360-550-6101. Lic. # JCSPAPM919DS. jcspaintingandmore.com.

Pressure Washing Services Plus Yard cleanup, light hauling, gutter cleaning, minor outside repairs, and honey-do lists. Serving the Port Ludlow area. Reliable local resident with local references. Call 360-301-8044 and ask for Gary.

Year-round home comfort and cost saving efficiency! Call AirFlo Heating's Port Ludlow based Comfort Specialist, Gary Bequette, for all your heating needs. 425-698-8885.

Home Maintenance Painting, electrical, plumbing, roofing, drywall, light remodel, landscaping, decks, hauling, concrete, pressure washing, general labor, and handyman services and more. David 360-301-9012.

LANDSCAPE & YARD SERVICES

Full-Service Yard Care. Based in Port Ludlow. Mowing, weeding, & more. Excellent references. Call Mike at Soundscape, 360-774-1421.

Brett's Stump Grinding. Goodbye ugly tree stumps! I'm professional, reliable, & reasonably priced. For info & to see before & after photos, go to bretts-stumpgrinding.com or call Brett Anibaldi at 360-774-1226.

Field's Tree Care LLC is a Certified Arborist here to help you with all your tree & shrub needs. Fine Pruning. Free Estimates. Licensed, bonded, insured. Lic # FIELDTC876DH. Dan Field 360-994-0166.

Artistic Landscape Creations - Specializing in all facets of landscape construction including landscape design and installation. Please visit our website at artisticlandscapecreations.net. Licensed, Bonded, and Insured for your protection. Lic. # ARTISLC842DQ. Ken Taylor 360-316-6107.

Irrigation repair, maintenance, and automatic flower bed systems. Seasonal start up and shut down. Call Wayne 360-643-3114. Email waynegrassman@aol.com.

William's Tree Work - Felling, removal, storm clean up, view enhancement, habitat creation. Licensed, Bonded, Insured. Lic# WILLITW834DU, 406-599-6868 Will Brinker Owner Operator locally based in Quilcene, williamstree-work.com.

Bishops Lawn Mowing and Maintenance. Brush removal lawn mowing gardening lawn service call 360-301-6930 for Austin or email Bishopslawnservice@aol.com.

Rhododendrons & azaleas. People interested in Rhododendrons or other plants or help with planting please call Otto at 360-437-5060.

MERCHANDISE

Marina Market, Poulsbo. Imported groceries, candy, cheese, beer, pickled herring, tinned fish, mackerel, bacon, sausages, chocolate, black licorice, breads, & cookies from Scandinavia, Holland, Germany, Russia, Bulgaria, Latvia, UK, & Indonesia. marinamarket.com. 888-728-0837.

Clearview Blinds Sales, Installations, Repairs. Bonded and Experienced, professional custom services with competitive pricing. Call Diane (formerly, Manager of Dana Pointe Interiors) for Free consultation. Exceptional references available upon request. 360 774-2658, diane@cvblinds.com.

Beautiful outdoor potted plants large and small including two Japanese maple trees. Also, two indoor orchids in handsome pots. 360-437-0592 Donna.

Antique Lace Queen Size Bed Covering available in excellent condition. 360-437-2806.

Hill Billy Powered Golf Trolley (used). Compact 3 Wheel, includes battery & charger. \$150. Call 360-301-2421.

For Sale: Golf clubs, Callaway Steelhead irons, Big Bertha Driver, Hybrid Fairway woods, range finder, golf bags and pull cart. Also, Kayak, 16' cedar strip, custom cockpit. Ron Gregory. Port Ludlow. 360-344-2058.

MISCELLANEOUS

Alcoholics Anonymous (AA) men's meeting every Tuesday 7:00 p.m. in Port Gamble at the General Store, downstairs conference room, north side of building. Phone Brian at 360-731-8077.

Clock Repair. Mantel, wall, cuckoo, or Grandfather's clocks repaired quickly at reasonable prices. Pickup & delivery or house call. Call Father Time at 360-437-5060.

Janice Fischer still accepting clothing alterations including hems, waists, mending, and repair. Household items like pillows and curtains. Reasonable. Sewing by Jan, located in Port Hadlock. Janice Fischer 360-385-9026.

Guests in Town? The Old Alcohol Plant offers Executive Suites and a Penthouse. Ask for the Special Port Ludlow, Extended Stay Rate. 360-390-4017.

Elena's Alterations & Tailoring. Providing professional seamstress services since 1992. For only the highest quality alterations or tailoring, call Elena today 360-437-9564(h), 206-305-1101(m).

SemperFiChauffeur.com Tired of the lack of options getting to SeaTac Airport? Leave your car & your worries locked at home in your garage. Call Retired Gunny, Brent Neel for quote. Best way to start/end your vacation. 206-718-6139. Satisfied customer says: " Hello Brent! Wow are we glad to find you! We have been struggling for years with the Seatac airport trip when we travel between our homes in Port Ludlow and abroad. We make this trip about 4 times a year and end up on that shuttle (ugh) or bribing friends and family for the drive. We will be in touch to book our flights. Thank you!" Ted & Connie

Personal In-Home Care Needed - Port Ludlow, elderly man needs a back-up on-call caregiver for monitoring, help with light meals/housework while his regular caregiver is away for 2 or 3 days at a time. Daily rate \$125. Please email kslack@shaw.ca for more details.

Mayan Astrology Readings - Discover your life's highest spiritual purpose. Printed chart of your cosmic DNA. Ceremony of initiation. Personal 5 Forces reading. Daily mantra. holistikliving.com. Call: 360-821-8764 or email: Info@holistikliving.com

PET CARE

Big Valley Pet Resort is a great place for your socialized pet to play while you are away. Check out bigvalleyanimalcarecenter.com or call 360-697-1451 for more information.

Fido Betta Katta. Pet-sitting, house-sitting, and dog walking – hourly, daily, and overnight. Licensed, bonded, and insured. Local references available. Call 425-559-1841 or email fidobettakatta@hotmail.com for more information.

Sharon's Pet and/or House Sitting! Experienced! Contact for fees and additional information! 970-980-1895. slg8600@yahoo.com.

REAL ESTATE/PROPERTY MANAGEMENT

Waterview Condo for Sale! Upgraded, Remodeled, 3bd/2 ¾Bth, 1600 sq.ft., 60 Hood Wy. #40, Pt Ludlow, \$379,000.00. Sherry Grimes, Realtor 360-460-5303 Port Ludlow Brokers, LLC.

Waterview Condo for Sale! Upgraded, Remodeled, 2bd/2bth, 1300 sq.ft., 20 Hood Way #22, Pt. Ludlow, \$349,000.00, Sherry Grimes, Realtor, 360-460-5303, Port Ludlow Brokers, LLC.

RV/BOATING/TRAVEL

RV Storage. South Bay, 1 mile west of Hood Canal Bridge on Hwy. 104. Call Shirley, 360-437-9298.

Beaver Valley Storage. 100 - 800 square feet. Twenty-four-hour security on duty. One month free with minimum six-month lease. 360-732-0400.

Seaward Passat Tandem Kayak - excellent condition. Check website for details: seawardkayaks.com Passat G3. \$2,000. 360-981-7349.

LEGAL SERVICES AND NOTARY

R. G. Bowen, Attorney at Law. Wills, Trust, Real Estate and Bankruptcy. 832-499 -1921.

Secretarial Services. Call Cammy Brown, Peninsula Legal Secretarial Services, LLC, 360-301-2590, cammybrown.org, for all your business and legal secretarial needs. Transcription, preparation of legal and business documents, typing projects, etc. I now have a second office inside the Post Office in Port Ludlow. Same phone, etc. By appointment only.

Notary Public: For Notary Public services call Cammy Brown, Peninsula Legal Secretarial Services LLC, 360-301-2590, located in Kivley Center, Port Hadlock and the Post Office in Port Ludlow, by appointment only.

Sandy's Mobile Notary. 20 years' experience. Certified Notary signing agent 360-437-5025, or cell 661-857-3804.

**Financial Disclosure
The Port Ludlow Voice**

The *Port Ludlow Voice* is a 501(c)(4) organization. Its entire staff consists of unpaid volunteers. All writing and editing is done in the homes of staff members on their personal computers. The production editor formats each issue and provides an electronic copy to the printer.

The *Voice* is delivered at no cost to readers on all U.S. Post Office carrier routes in the Master Planned Resort (MPR). As of August 2019, subscriptions are \$30/year or prorated at \$2.50/month.

Financial support for publishing the *Voice* each month comes from advertising, subscriptions and contributions primarily from community organizations. Average monthly income was:

1. Ludlow Maintenance Commission (LMC)	\$200
2. South Bay Community Association (SBCA)	\$200
3. Port Ludlow Village Council (PLVC)	\$200
4. Display Advertising	\$6156
5. Classified Advertising	\$481
6. Subscriptions	\$57
7. Web Advertising	\$47
Total average monthly income in fiscal year 2018/19	\$7341

Paper Content: The *Voice* gloss cover stock is balanced recycled FSC certified with 30 percent recycled content. It is elemental chlorine free. The inside stock is acid free and meets the sourcing requirements of the Sustainable Forest Initiative.

©2019 *Port Ludlow Voice*. All rights reserved.
Printed in the U.S.A.

No part of this publication may be reproduced in any form without express written permission of the *Port Ludlow Voice*.

This issue proofread by Marie Bogan, John Goldwood, Mary Ellen Meryhew and Mary Small.



FULL SERVICE BOATYARD
 ABYC Master Technicians • Haul Out Lift
 Canvas Shop • Full Joinery Shop
 Electrical Repower • Plumbing • Painting
 Winter Storage • Provisions

SYSTEMS SHOW ROOM & SERVICE CENTER
 GPS Navigation • Beta Engines • Electronics
 Water Heaters • Heating Systems • Inverters



Sandy Bakken, Broker

BROKERAGE SERVICES

Buying a boat? Selling a boat?
 SEA Marine offers full Brokerage Services.
 Contact Sandy Bakken for a consultation.
<http://seamarineco.com/yacht-brokerage-listings/>

For all your boating needs!
SEA...the difference.

Point Hudson, Port Townsend
 (360)385-4000 • seamarineco.com

Clydene Lloyd

Port Ludlow Brokers, LLC

I have lived in Port Ludlow for 30 years and have 48 years in real estate, specializing in clients who need my help!

Before you sign a listing agreement, call me to hear about my ultimate listing package.
 Call Clydene at 360-301-4316

(360) 301-4316 | clloyd@olypen.com
www.portludlowbrokers.com



Kristin Manwaring, Licensed Agent

Medicare Solutions Made Simple!

Need a Consultation?
 Call our office!



Kristin Manwaring Insurance

360-385-4400

www.KristinManwaring.com

Grace Christian Center

Solid, Spirit-Filled Bible Teaching

Grace Christian Center is celebrating 20 years of serving our Lord Jesus here. Planted in Port Ludlow, we welcome people from all over the Kitsap and Olympic Peninsulas to worship with us. We believe the Bible is God's Word and we bring relevant teaching for today from the Scriptures, with understanding of history and context, to bring you strength and hope in your daily life.

Grace Christian Center--look forward to seeing you, Sunday mornings at 10.

Pastors Kevin and Sherri Hunter
 Senior Pastors

360-821-9680

360-821-9684

Port Ludlow Conference Center • 200 Olympia Place, Port Ludlow
www.gracechristiancenter.us

Loving Jesus and Loving Each Other



Port Ludlow Art League

Go to portludlowart.org for creative inspiration and online art shows!

Jefferson Healthcare

NEED CARE? **GET CARE.**

Don't delay. You have full access to the care you need.
Jefferson Healthcare has created the safest possible
environment of care for our patients.

SCREEN for symptoms

EVALUATE & SEPARATE
people with COVID-like symptoms

DISTANCE people from others

LIMIT visitors

MASK patients, visitors and staff

CLEAN even more often



THE STEPS WE TAKE
TO KEEP YOU SAFE.